

PLAT OF  
**MOWRY STREET**

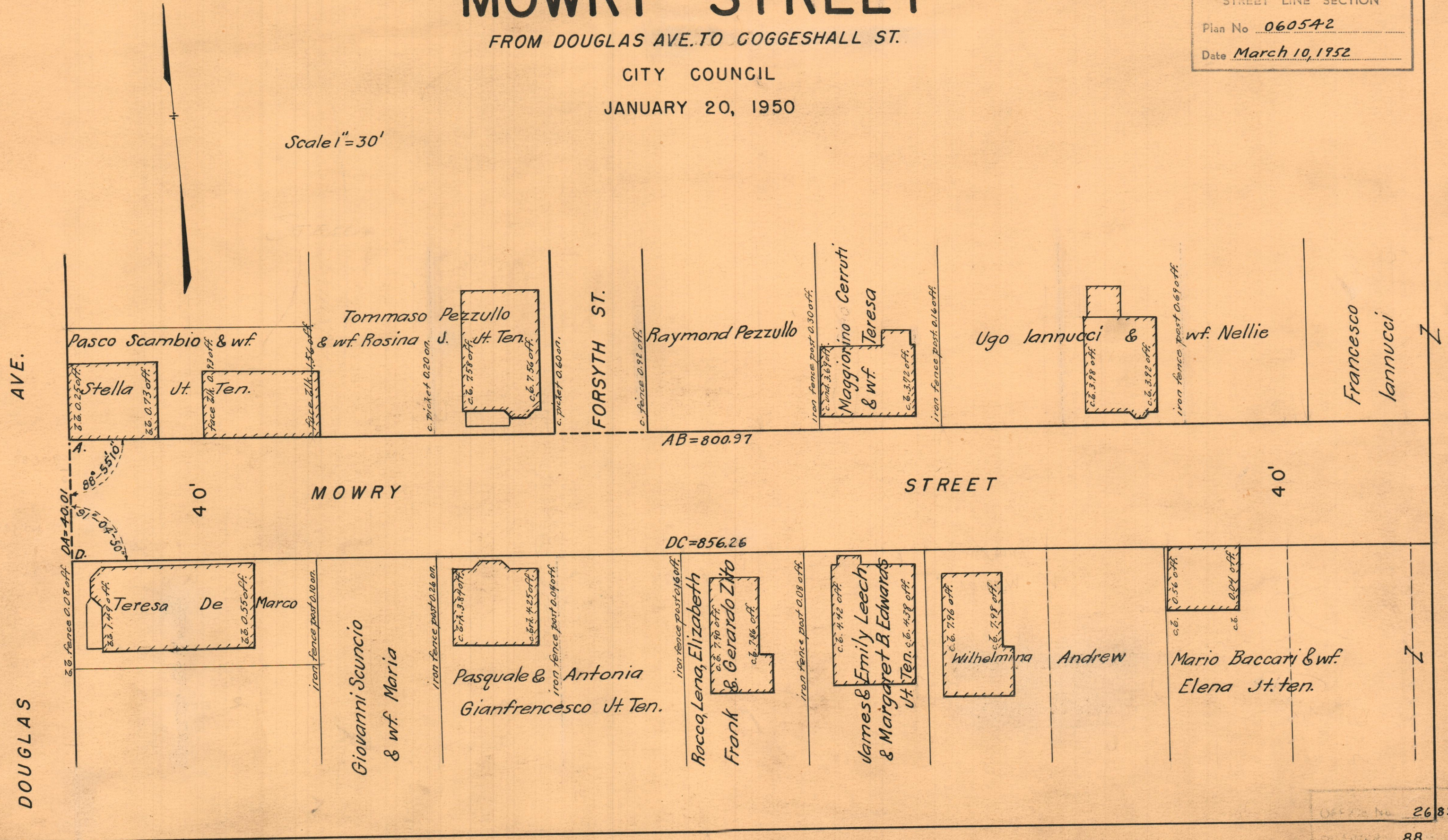
FROM DOUGLAS AVE. TO GOGGESHALL ST.

CITY COUNCIL

JANUARY 20, 1950

PROVIDENCE, R. I.  
P. W. DEPT. - ENGINEERING OFFICE  
STREET LINE SECTION  
Plan No 060542  
Date March 10, 1952

Scale 1" = 30'



OFFICE No 26899

88  
A 30