

PLAT OF PLEASANT VALLEY PKWY.

IN TWO SHEETS

From ACADEMY AVE. TO JUSTICE ST.

CITY COUNCIL

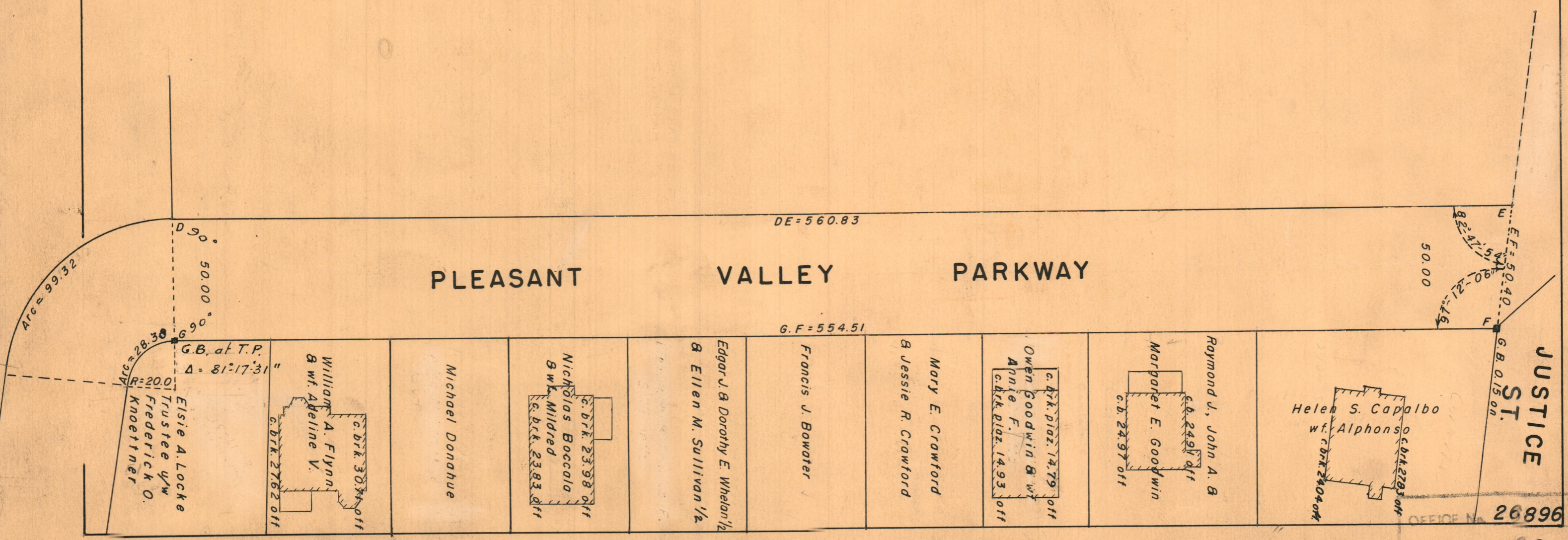
JUNE 8, 1951

Scale 1" = 40'

PROVIDENCE, R. I.
 P. W. DEPT. - ENGINEERING OFFICE
 STREET LINE SECTION
 Plan No. 060535
 Date MARCH 3, 1952



Chad Cole



OFFICE No. 26896
 DRAWER 88
 SHEET A-27