

PLAT OF PLEASANT VALLEY PKWY.

IN TWO SHEETS

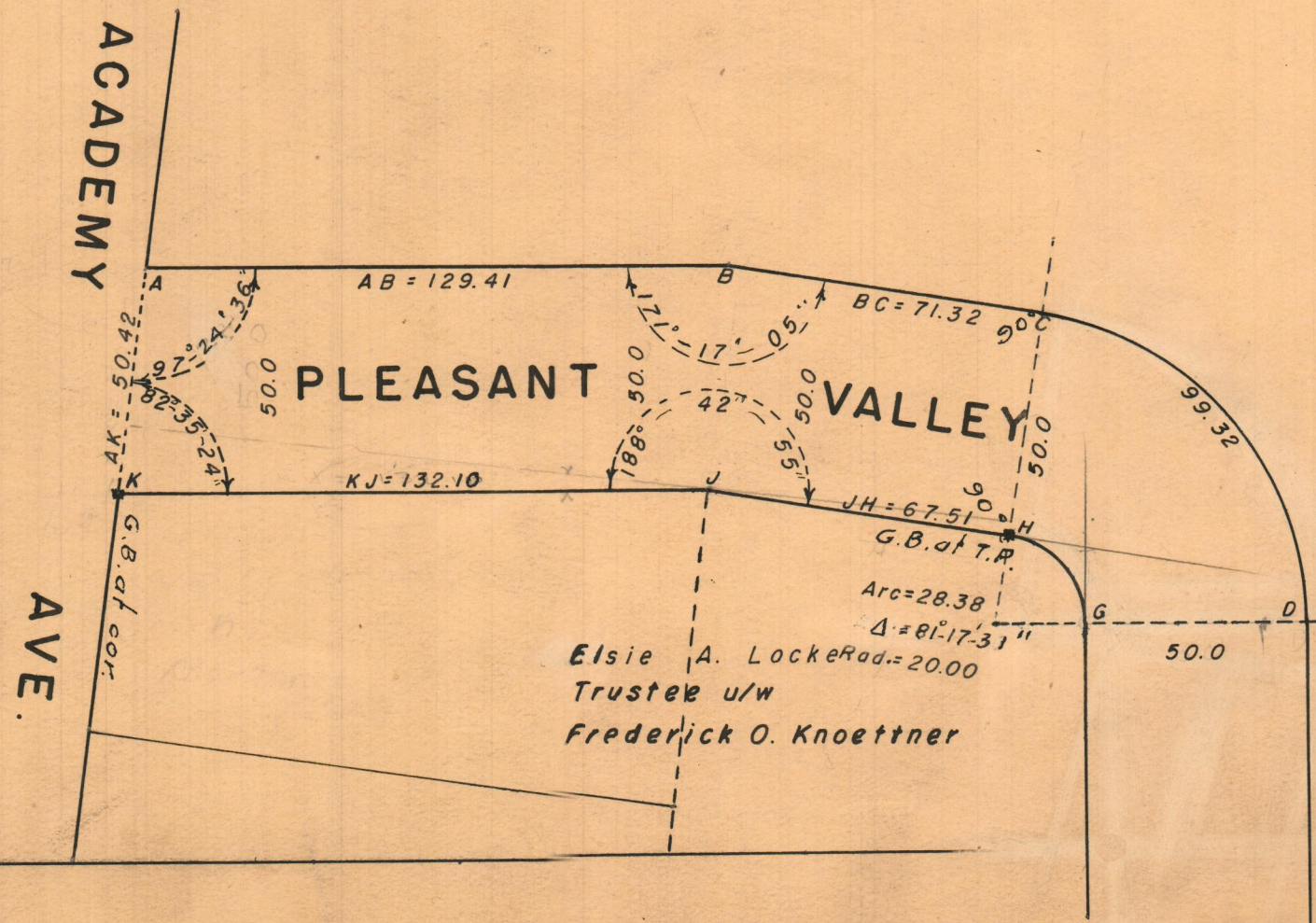
From ACADEMY AVE. TO JUSTICE ST.

CITY COUNCIL

JUNE 8, 1951

Scale 1" = 40'

PROVIDENCE, R. I.
 P. W. DEPT. - ENGINEERING OFFICE
 STREET LINE SECTION
 Plan No. 060534
 Date MARCH 3, 1952



Elsie A. Locke
 Trustee u/w
 Frederick O. Knoettner

OFFICE No. 26895
 DRAWER 88
 SHEET A-26