

PLAT OF  
**NORTH GROVE STREET**

PROVIDENCE, R.I.  
 CITY ENGINEER'S OFFICE  
 STREET LINE DEPT.  
April 10, 1943  
059218

FROM SMITHFIELD AVE. TO CEMETERY ST.

ABANDONED

BY BOARD OF ALDERMEN

DECEMBER 1, 1932

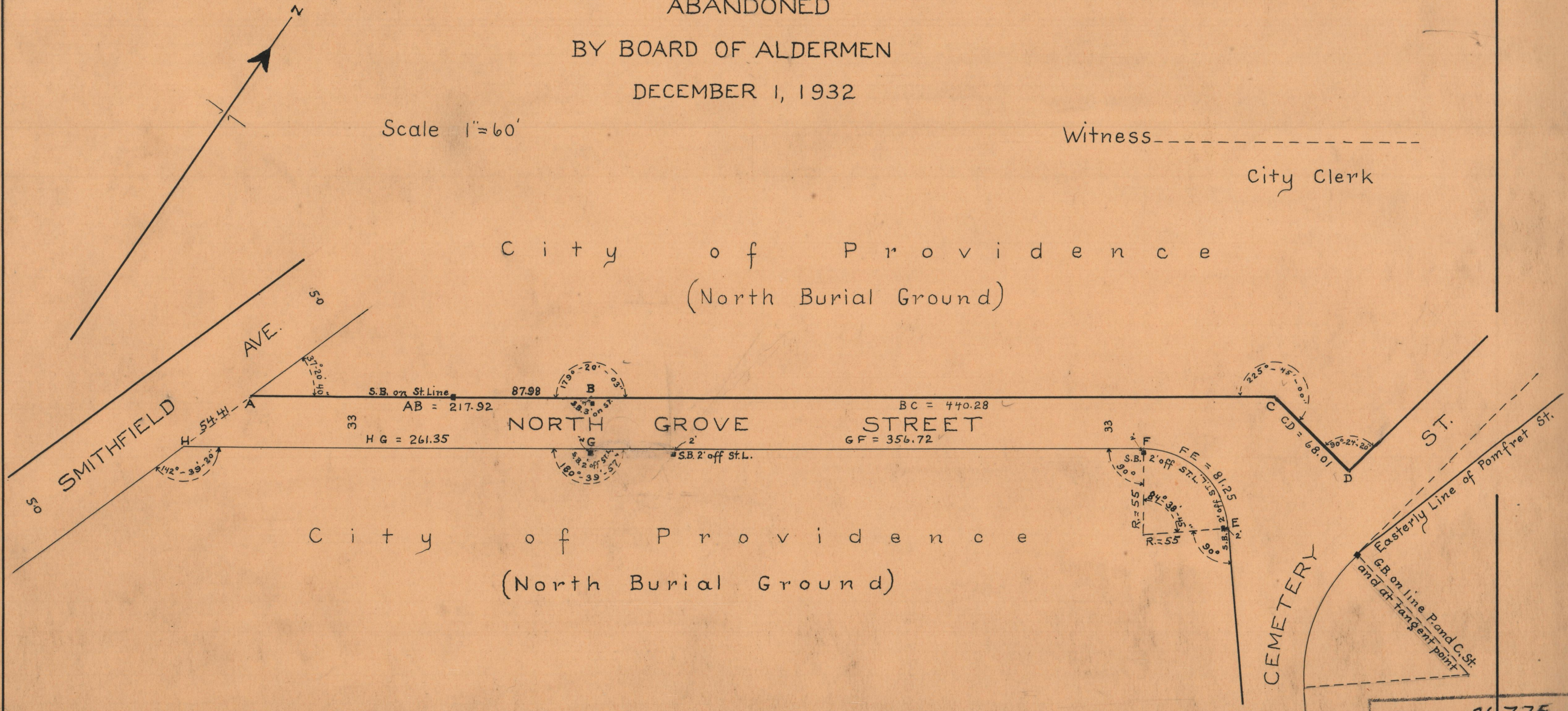
Scale 1" = 60'

Witness -----

City Clerk

C i t y o f P r o v i d e n c e  
 (North Burial Ground)

C i t y o f P r o v i d e n c e  
 (North Burial Ground)



OFFICE No. 26775  
 DRAWER " 87  
 SHEET " C-8