

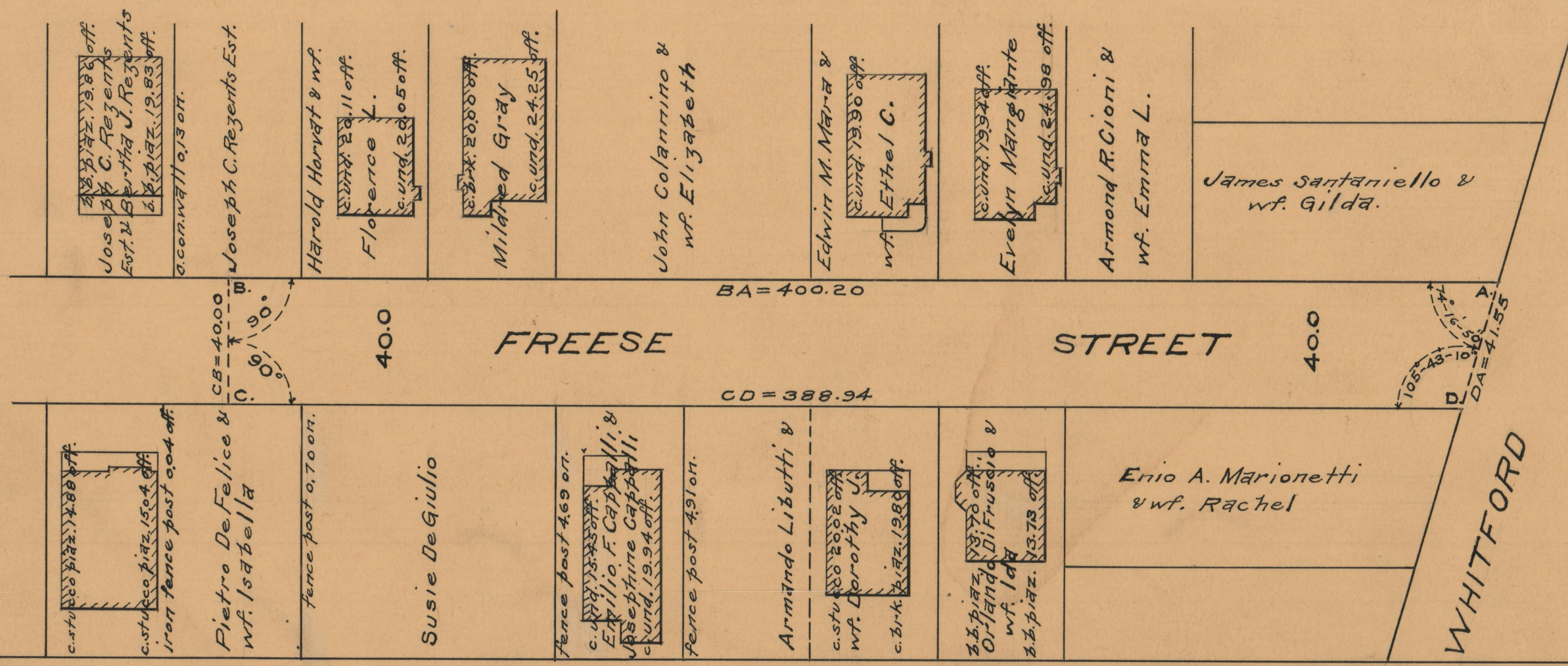
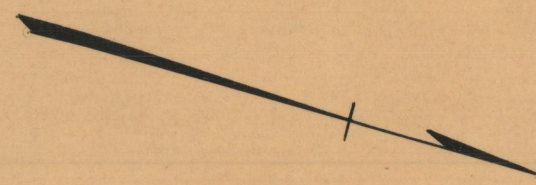
# PLAT OF FREESE STREET

FROM WHITFORD AVE. ABOUT 394 FT. SOUTHERLY TO RECEIVED PORTION  
CITY COUNCIL  
MARCH 3, 1950

SCALE 1" = 40'

PROVIDENCE, R. I.  
P. W. DEPT. - ENGINEERING OFFICE  
STREET LINE SECTION  
Plan No. 060305  
Date FEBRUARY 12, 1951

400.20  
388.94  
2 789.14  
394.57



Joseph C. Rezzents  
Est. & B. Piazza J. Rezzents  
b. b. piazz. 19.86 off.  
b. b. piazz. 19.83 off.  
a. con. wall 0.13 on.

Joseph C. Rezzents Est.

Harold Harvat & wf.  
Florence L.  
c. und. 20.05 off.

Mildred Gray  
c. und. 24.25 off.

John Colannino &  
wf. Elizabeth

Edwin M. Mara &  
wf. Ethel C.  
c. und. 19.90 off.

Evelyn Mangante  
c. und. 19.94 off.  
c. und. 24.98 off.

Armond R. Cioni &  
wf. Emma L.

James Santaniello &  
wf. Gilda.

Pietro De Felice &  
wf. Isabella  
c. st. u. 13.88 off.  
c. st. u. 15.04 off.  
Iron fence post 0.04 off.

Susie DeGiulio  
fence post 0.70 on.

Armando Libutti &  
wf. Dorothy J.  
c. brk. 17.19 off.  
c. st. u. 19.94 off.  
fence post 4.69 on.

Erilio F. Cappelli &  
Josephine Cappelli  
c. und. 19.94 off.

Orlando Di Frusca &  
wf. Ida  
b. b. piazz. 13.73 off.

Enio A. Marionetti  
& wf. Rachel

WHITFORD AVE.

OFFICE No. 26847  
DRAWER 87  
SHEET C-78