

PROVIDENCE, R.I.
CITY ENGINEER'S OFFICE

STREET LINE DEPT.

APRIL 7, 1943

059204

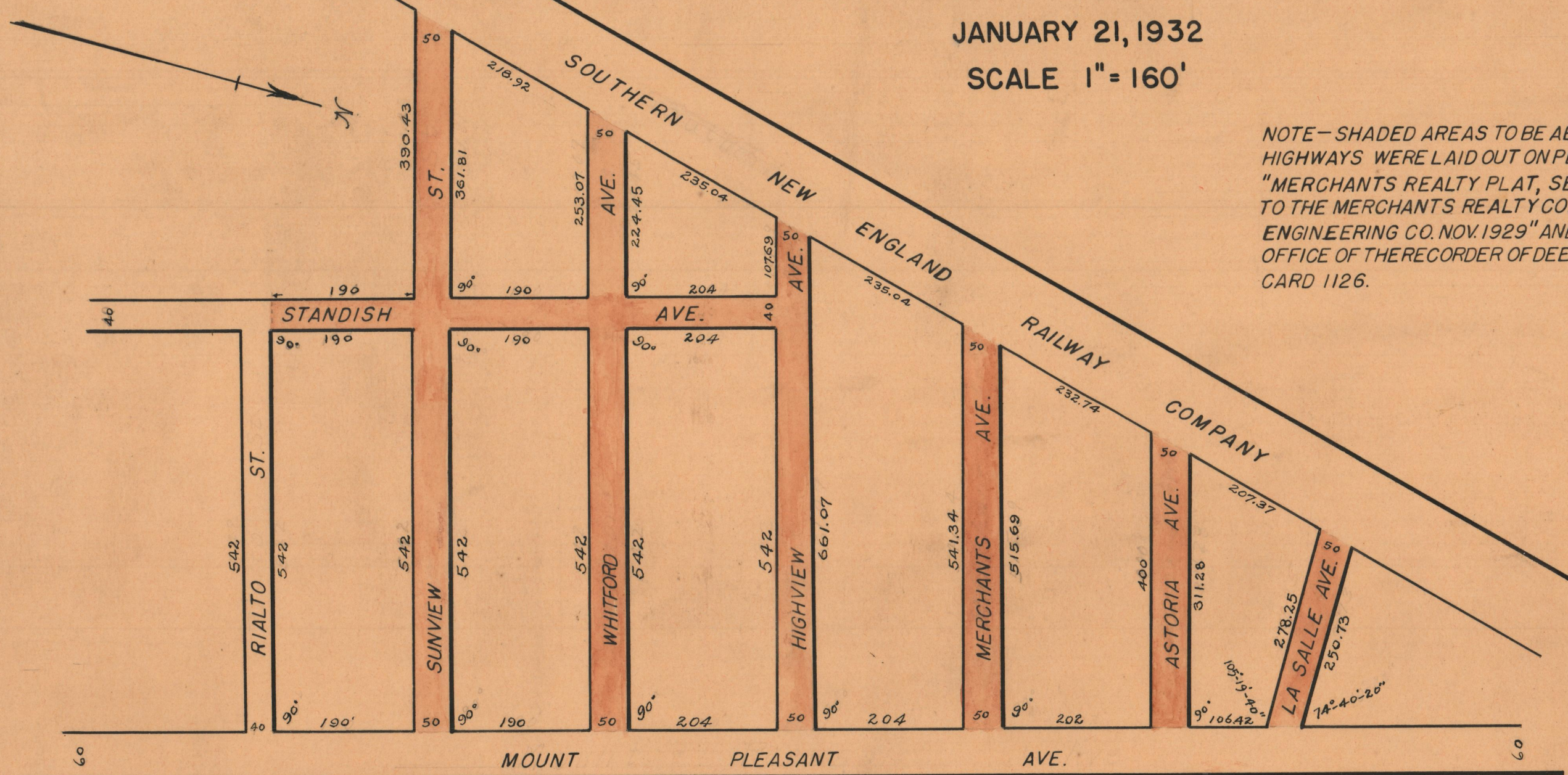
PLAT

SHOWING SHADED PORTION OF LA SALLE AVENUE, ASTORIA AVENUE,
MERCHANTS AVENUE, HIGHWAY AVENUE, WHITFORD AVENUE, SUNVIEW STREET,
AND STANDISH AVENUE AS ABANDONED BY THE BOARD OF ALDERMEN

JANUARY 21, 1932

SCALE 1" = 160'

NOTE - SHADED AREAS TO BE ABANDONED AS PUBLIC
HIGHWAYS WERE LAID OUT ON PLAT ENTITLED,
"MERCHANTS REALTY PLAT, SECTION B, BELONGING
TO THE MERCHANTS REALTY CO., INC. BY WATERMAN
ENGINEERING CO. NOV. 1929" AND RECORDED IN THE
OFFICE OF THE RECORDER OF DEEDS ON PLAT
CARD 1126.



OFFICE No. 26774
DRAWER " 87
SHEET " C-7