

PLAT OF
OLD ROAD
 FROM SMITH ST. TO MT. PLEASANT AVE.
 CITY COUNCIL
 MAY 19, 1950

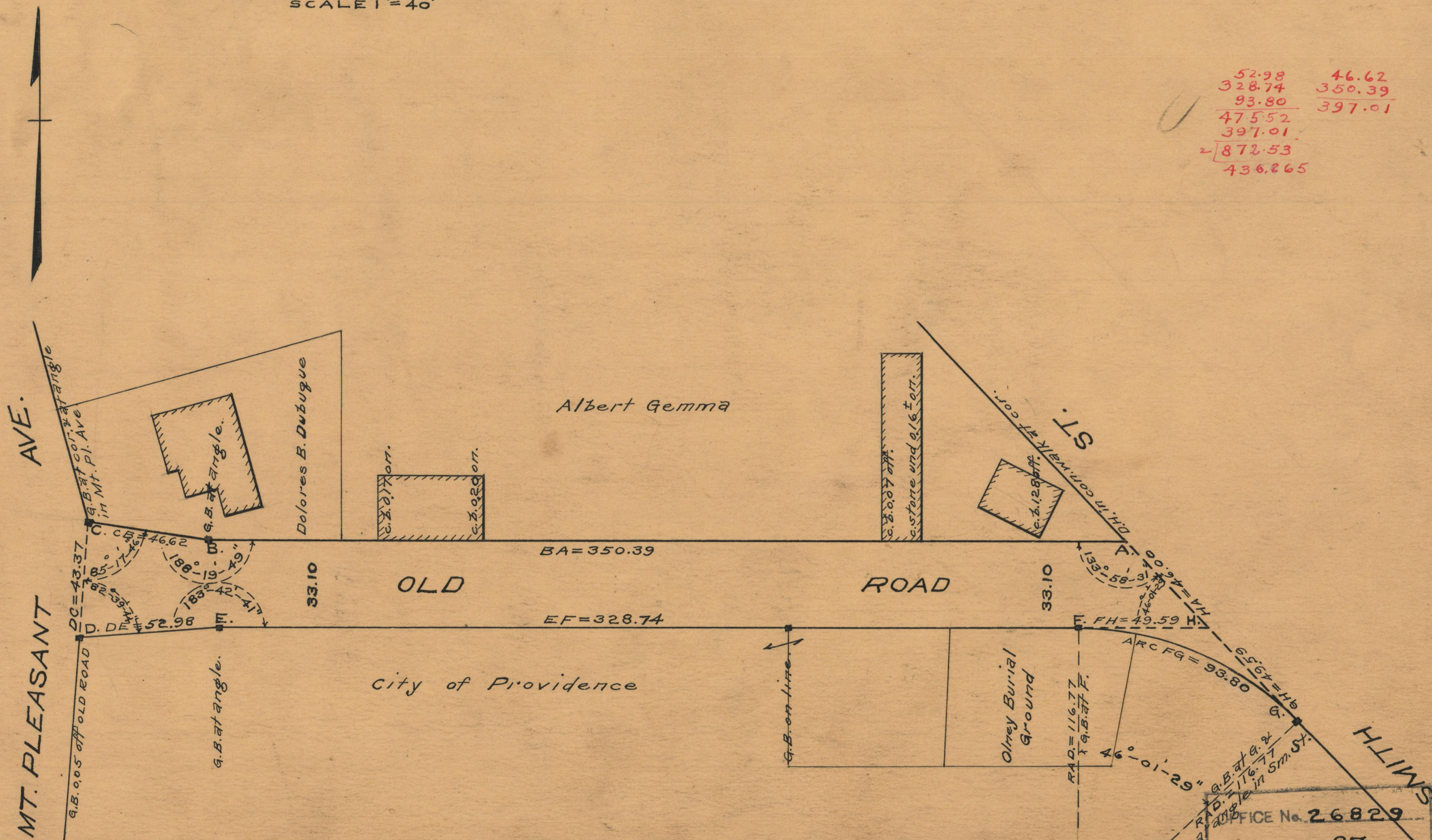
PROVIDENCE, R. I.
 CITY ENGINEER'S OFFICE
 STREET LINE DEPT.

DECEMBER 5, 1950

060262

SCALE 1"=40'

52.98	46.62
328.74	350.39
93.80	397.01
475.52	
397.01	
2 872.53	
436.265	



OFFICE No. 26829
 DRAWER 87
 SHEET C-60