

PLAT OF
KOSSUTH STREET

FROM BOWDOIN STREET TO ITS EASTERLY TERMINATION

ABANDONED BY

BOARD OF ALDERMEN

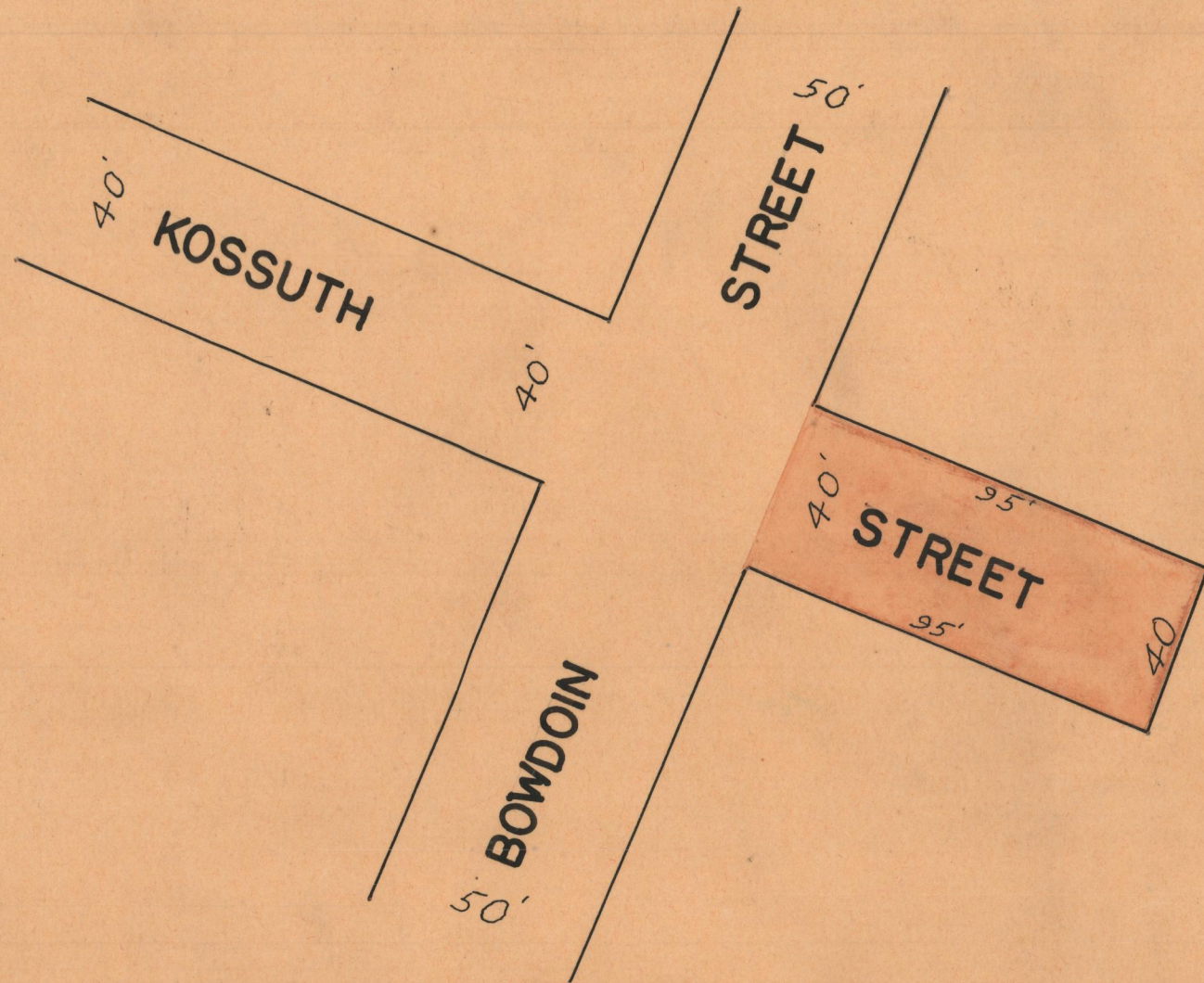
JULY 6, 1933

PROVIDENCE, R.I.
CITY ENGINEER'S OFFICE
STREET LINE DEPT.

April 2, 1943

059196

Scale 1"=40'



Witness _____
City Clerk _____

OFFICE No.	26774
DRAWER „	87
SHEET „	C-6