

PLAT OF MIDDLETON STREET

FROM HARTFORD AVE. TO BARBARA ST.
CITY COUNCIL
JANUARY 20, 1950.

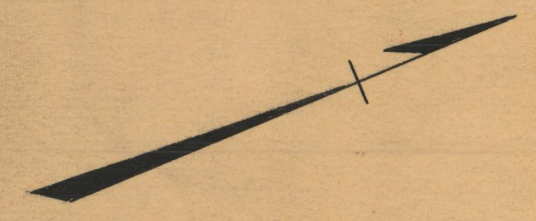
PROVIDENCE, R. I.
CITY ENGINEER'S OFFICE
STREET LINE DEPT.

OCTOBER 10, 1950.

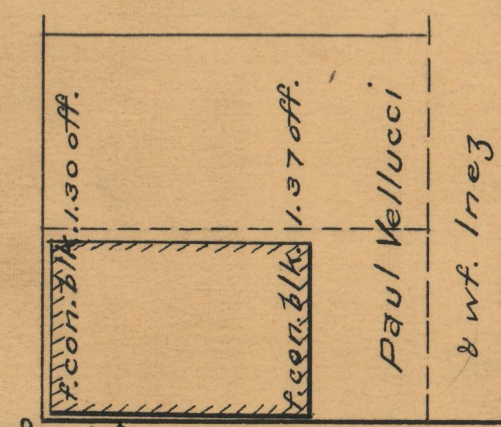
060186

SCALE 1" = 50'

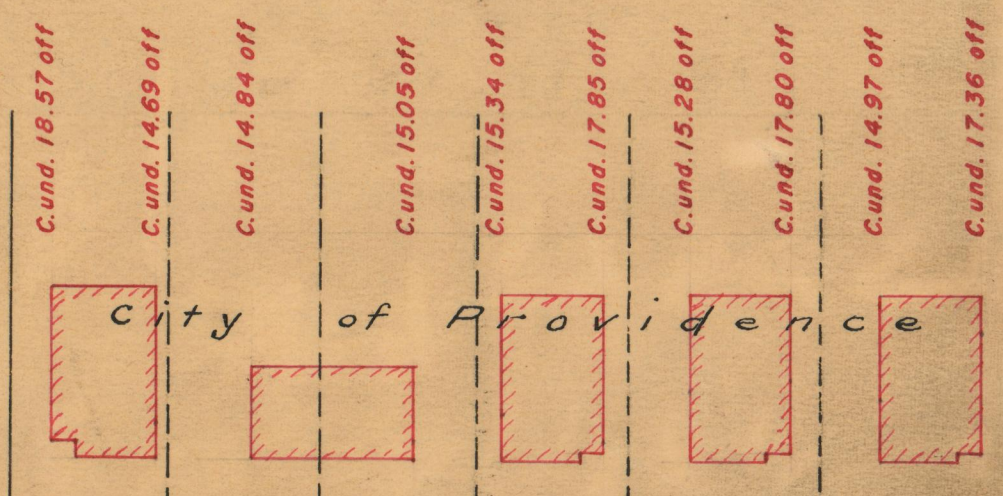
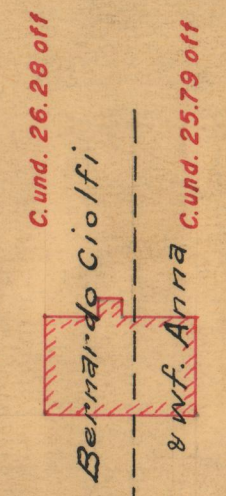
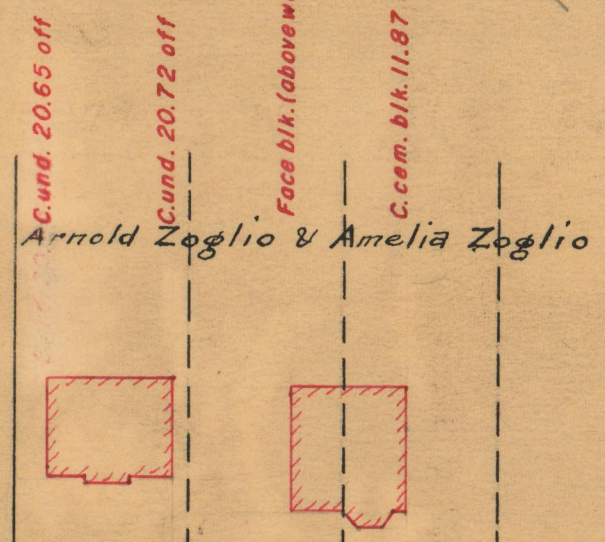
650



HARTFORD AVE.



40.0



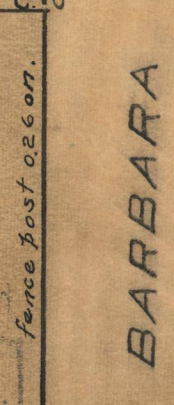
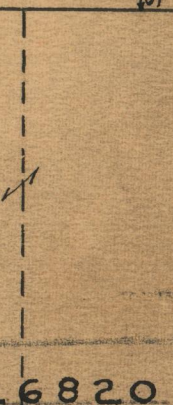
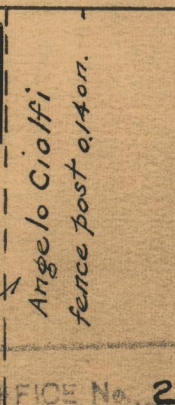
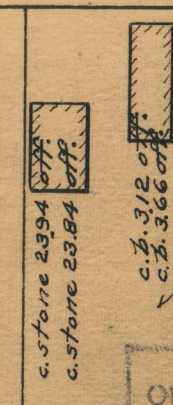
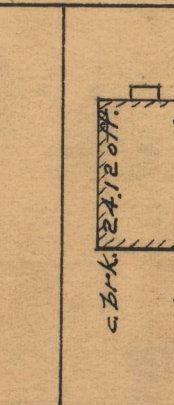
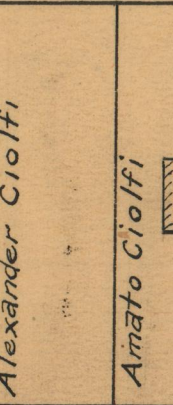
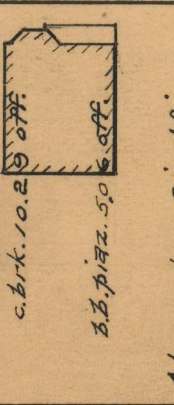
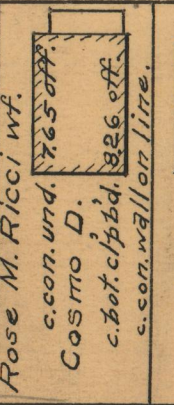
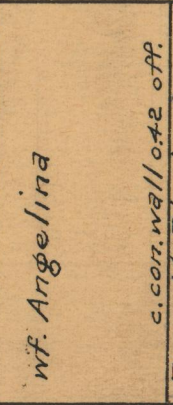
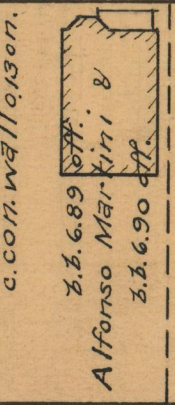
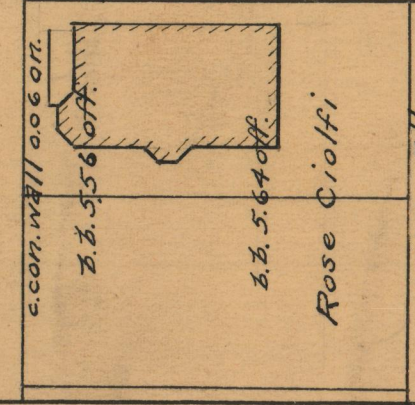
AB = 650.00

MIDDLETON STREET

DC = 650.00

40.0

HARTFORD AVE.



90° 00' 00" B. B. 1.1
CB = 400.00

abandoned ST. 1967

BARBARA ST.

OFFICE No. 26820
DRAWER 87
SHEET C-51