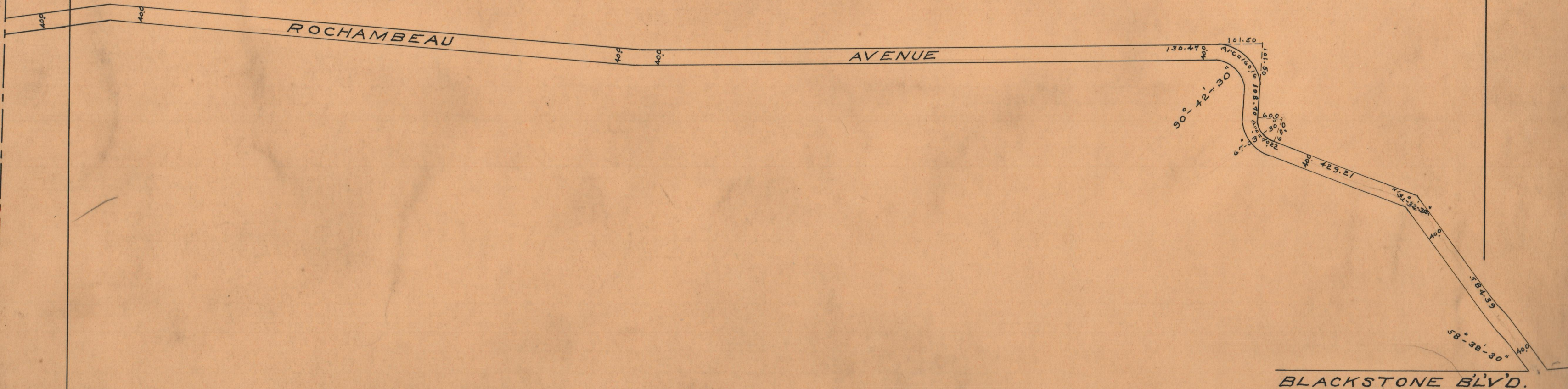
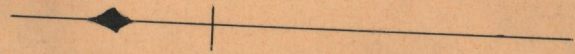


SEE D.B. 772 - P. 407.  
P.B. 40 - P. 13. OCT. 13, 1933.

PLAT OF  
**ROCHAMBEAU AVENUE**  
FROM BLACKSTONE BLVD TO THE CITY LINE  
ABANDONED  
BY THE BOARD OF ALDERMEN  
MARCH 16, 1933.

PROVIDENCE, R.I.  
CITY ENGINEER'S OFFICE  
STREET LINE DEPT.  
April 5, 1943  
059200

Scale 1" = 240'



OFFICE No. 26773  
DRAWER " 87  
SHEET C 5