

PLAT OF
STANTON STREET

FROM UNION AVE. TO PRUDENCE AVE.

CITY COUNCIL

JANUARY 20, 1950.

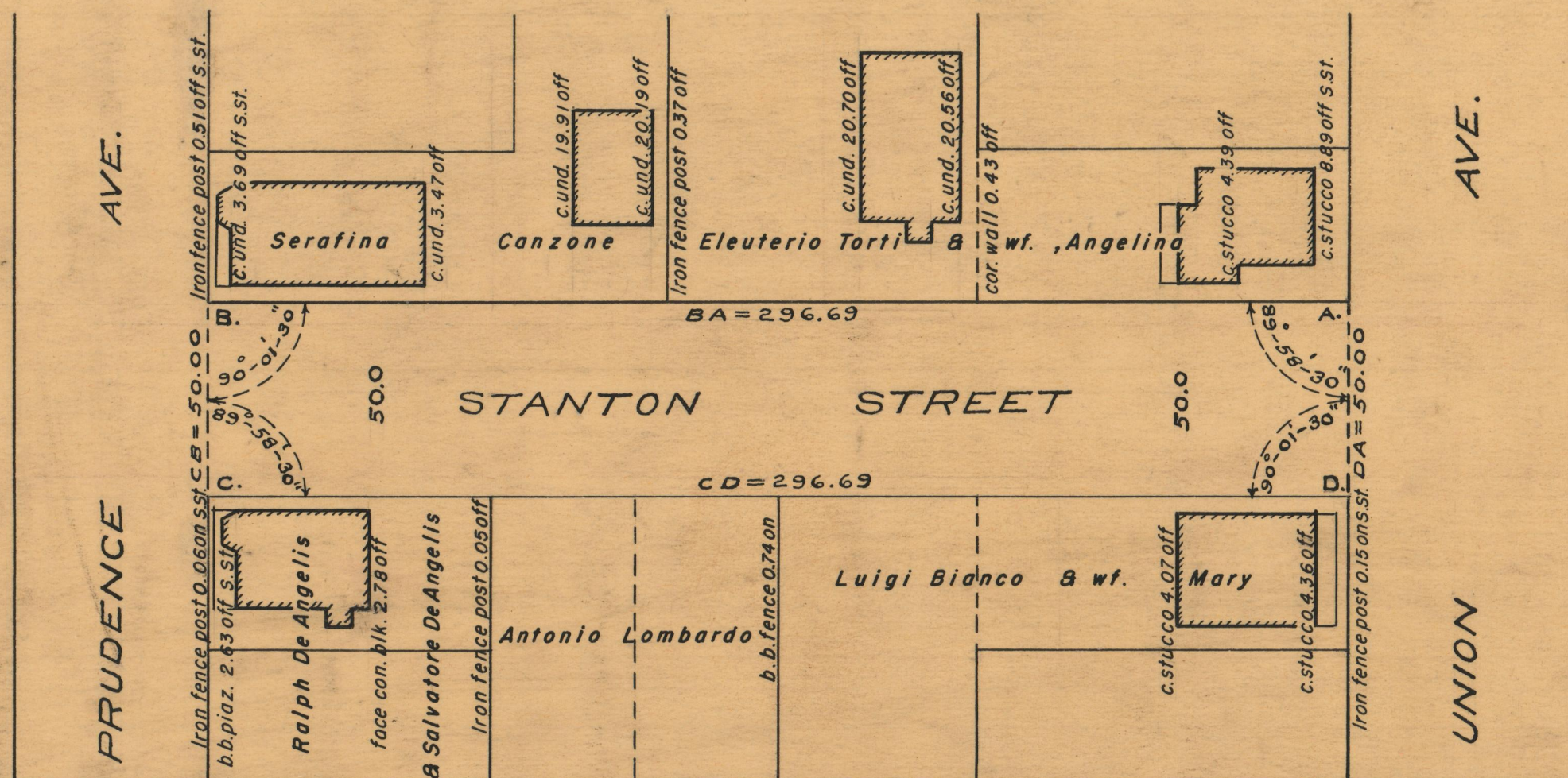
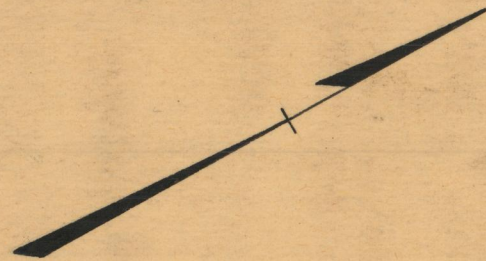
PROVIDENCE, R. I.
 CITY ENGINEER'S OFFICE
 STREET LINE DEPT.

OCTOBER 10, 1950.

060182

SCALE 1" = 40'

296.69



OFFICE No. 26818
 DRAWER " 87
 SHEET " C-49