

3234-58,9  
3234-58,59.

PLAT OF  
**GEORGIAN COURT**  
FROM KILLINGLY ST. TO THE PROVIDENCE CITY LINE  
CITY COUNCIL  
NOVEMBER 18, 1948.

PROVIDENCE, R. I.  
CITY ENGINEER'S OFFICE  
STREET LINE DEPT.

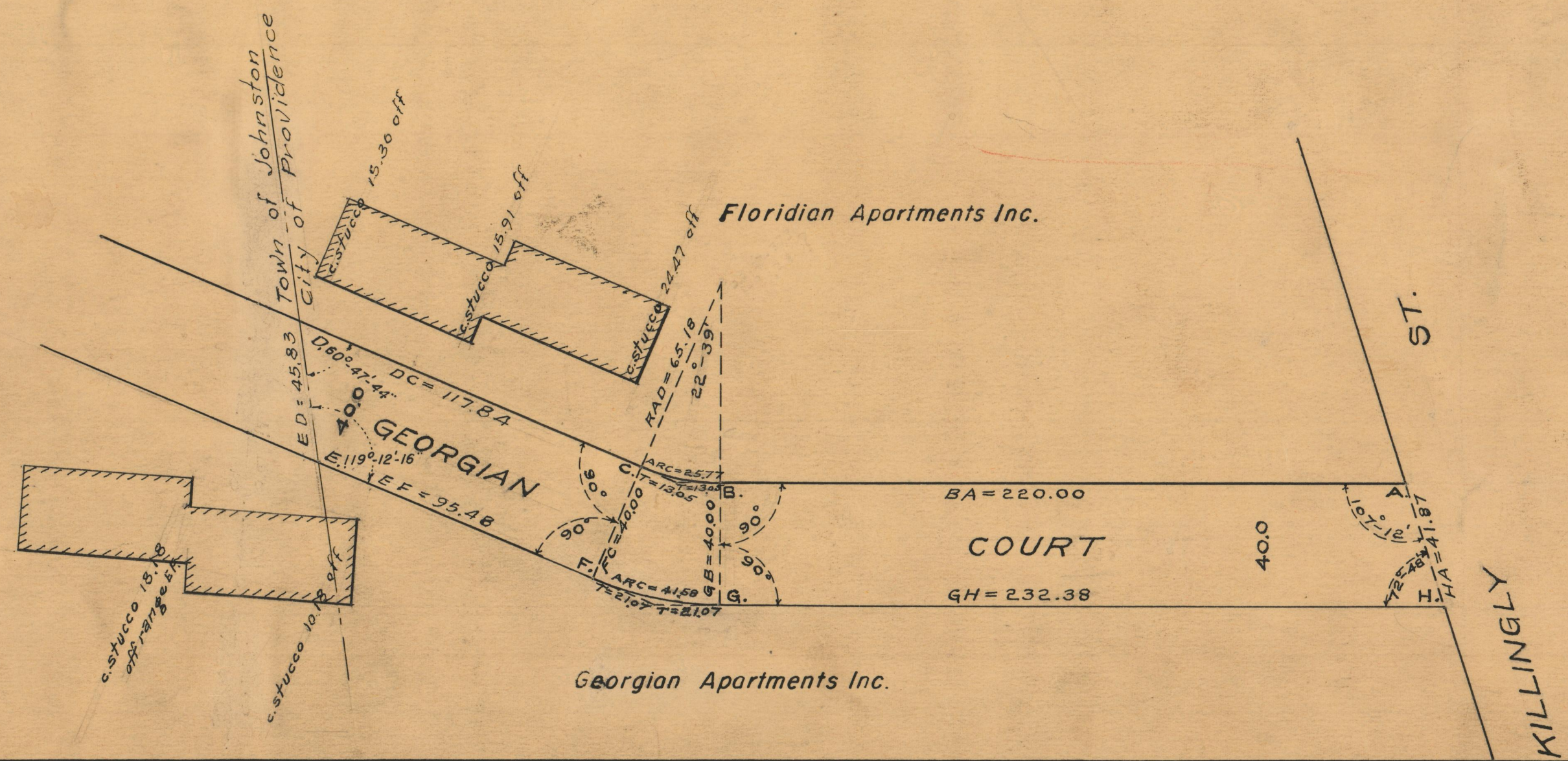
FEBRUARY 21, 1950.

060177

SCALE 1" = 40'



*Name Changed to Westwood Manor Drive  
Sept 23, 1964*



OFFICE No. 26816  
DRAWER " 87  
SHEET " C-47