

# PLAT OF KENTLAND AVENUE

From ADMIRAL ST. To GENTIAN AVE.

City Council

May 8, 1950

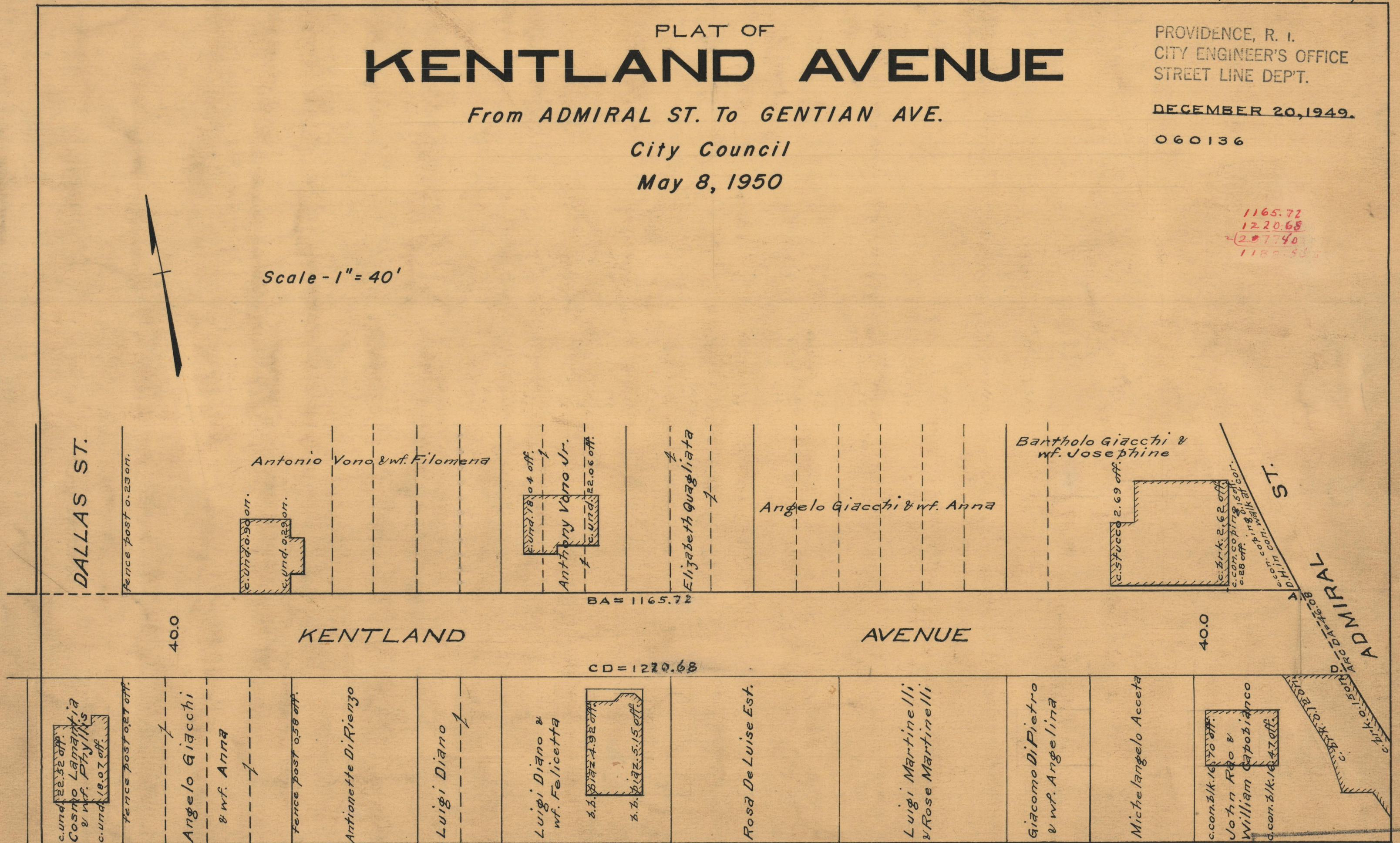
PROVIDENCE, R. I.  
CITY ENGINEER'S OFFICE  
STREET LINE DEPT.

DECEMBER 20, 1949.

060136

1165.72  
1220.68  
~~2077.40~~  
1165.85

Scale - 1" = 40'



DALLAS ST.

fence post 0.23 on.

c. und. 0.90 on.

c. und. 0.29 on.

Antonio Vono & wf. Filomena

c. und. 0.04 off.

Anthony Vono Jr.

c. und. 0.22.06 off.

Elizabeth Quagliata

Angelo Giacchi & wf. Anna

Bartholo Giacchi & wf. Josephine

c. stucco 2.69 off.

c. brick 2.62 off.

c. con. coping 0.15 off.

c. con. coping 0.28 off.

c. con. coping 0.15 off.

c. con. coping 0.15 off.

ADMIRAL ST.

40.0

KENTLAND

AVENUE

40.0

BA = 1165.72

CD = 1220.68

c. und. 22.52 off.

Cosmo Lamarkia & wf. Phyllis

c. und. 18.07 off.

fence post 0.27 off.

Angelo Giacchi

& wf. Anna

fence post 0.58 off.

Antionette Di Rienzo

Luigi Diano

Luigi Diano & wf. Felicetta

s. b. 2.92 off.

s. b. 5.15 off.

Rosa De Luise Est.

Luigi Martinelli & Rose Martinelli

Giacomo Di Pietro & wf. Angelina

Michele Angelo Acceta

c. con. blk. 16.70 off.

John Rao & William Capobianco

c. con. blk. 16.47 off.

OFFICE No. 26810

DRAWER " 87