

PLAT OF VENICE STREET

FROM DOUGLAS AVE. TO ITS WESTERLY TERMINATION
CITY COUNCIL
APRIL 25, 1949.

PROVIDENCE, R. I.
CITY ENGINEER'S OFFICE
STREET LINE DEPT.

MAY 27, 1949

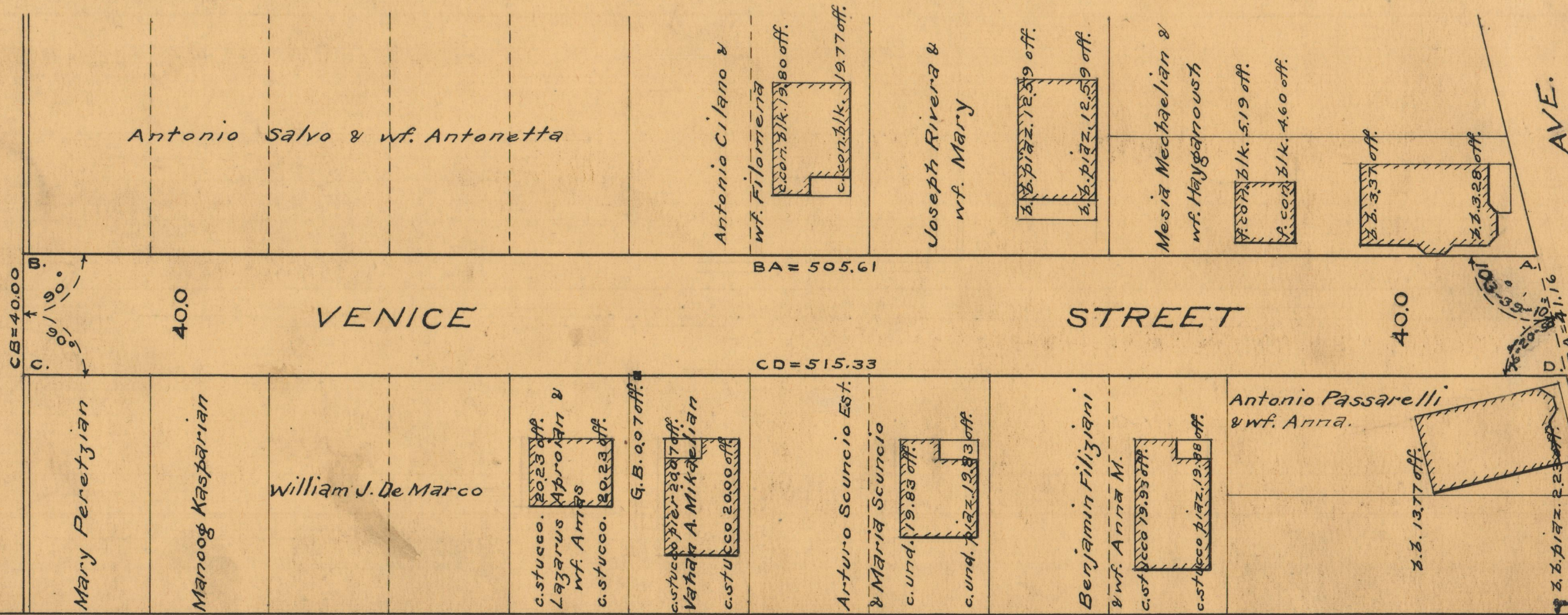
060041

SCALE 1" = 40'



505.61
515.33
2(1020.94)
510.47

City of Providence



AVE.

DOUGLAS

OFFICE No. 26797
DRAWER 87
SHEET C-28