

PLAT OF  
**AUGUST STREET**

FROM DOUGLAS AVE. TO THE CHARLES V. CHAPIN HOSPITAL GROUNDS  
 CITY COUNCIL  
 APRIL 25, 1949

PROVIDENCE, R. I.  
 CITY ENGINEER'S OFFICE  
 STREET LINE DEPT.

MAY 20, 1949

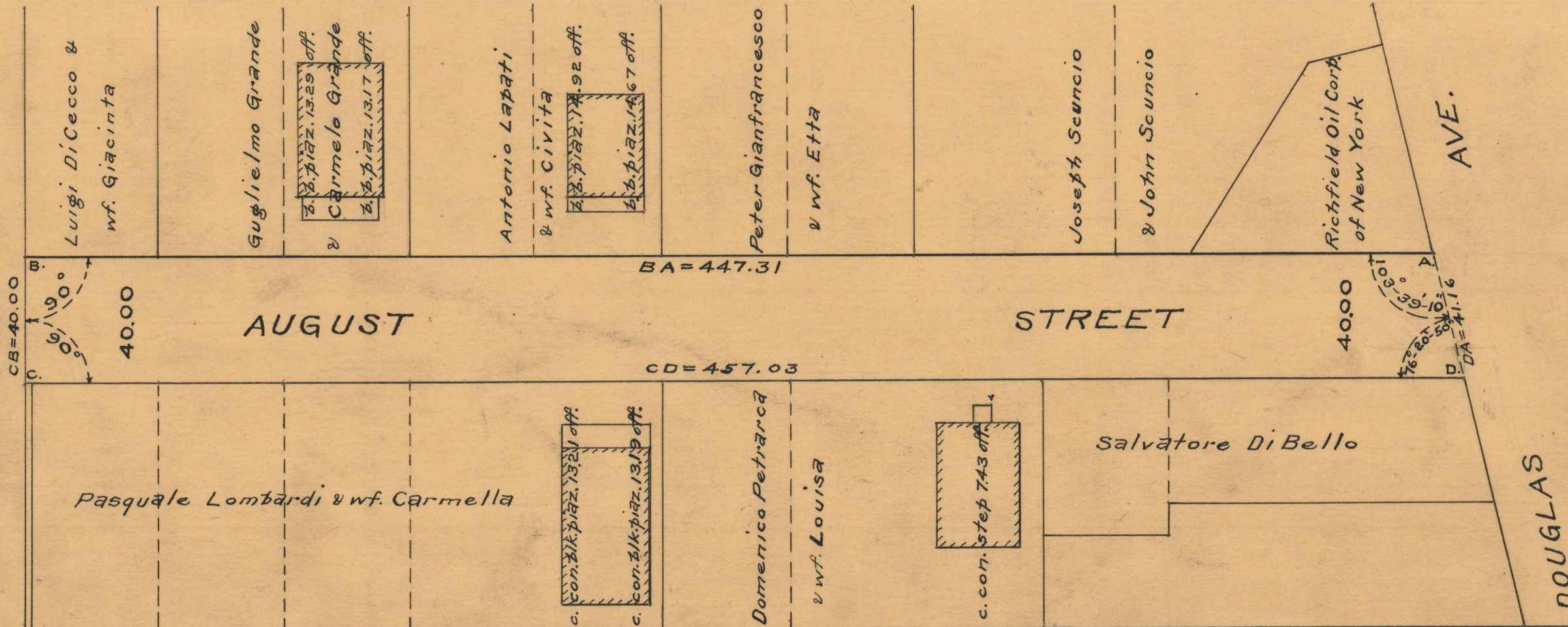
060037

SCALE 1" = 40'



447.31  
 457.03  
 2 904.34  
 452.17

CHARLES V. CHAPIN HOSPITAL



OFFICE No. 26796  
 DRAWER " 87  
 SHEET " C-27

360  
 128  
 948  
 45603