

PLAT OF PHEBE STREET

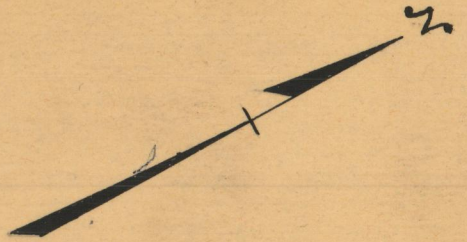
IN TWO SHEETS
FROM ADMIRAL ST. TO GENERAL ST.
CITY COUNCIL
APRIL 2, 1948.

PROVIDENCE, R. I.
CITY ENGINEER'S OFFICE
STREET LINE DEPT.

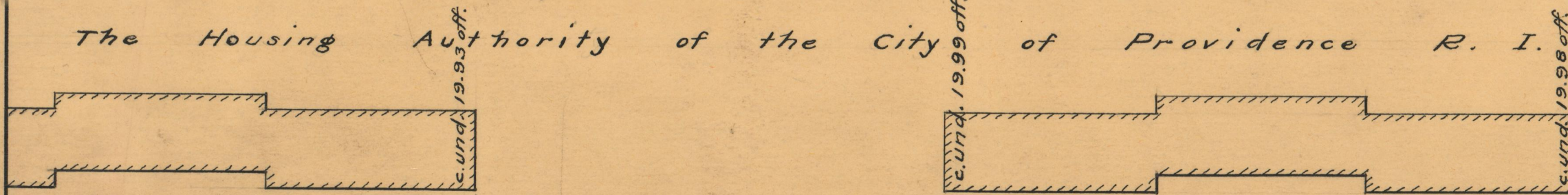
APRIL 4, 1949

060009

SCALE 1"=40'



The Housing Authority of the City of Providence R. I.



AB = 1021.78

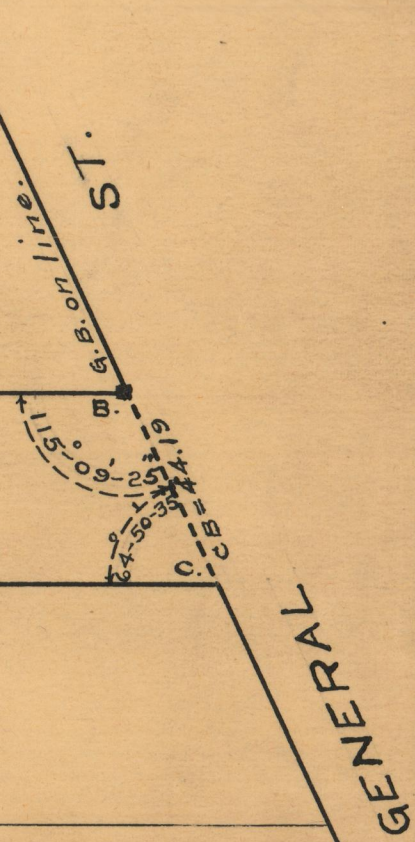
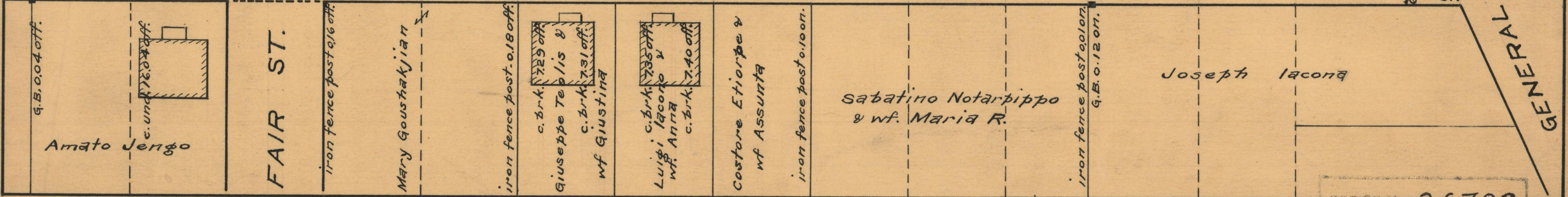
40.0

PHEBE

STREET

40.0

DC = 1045.45



OFFICE NO. 26792
DRAWER 87
SHEET C-23