

# PLAT OF PHEBE STREET

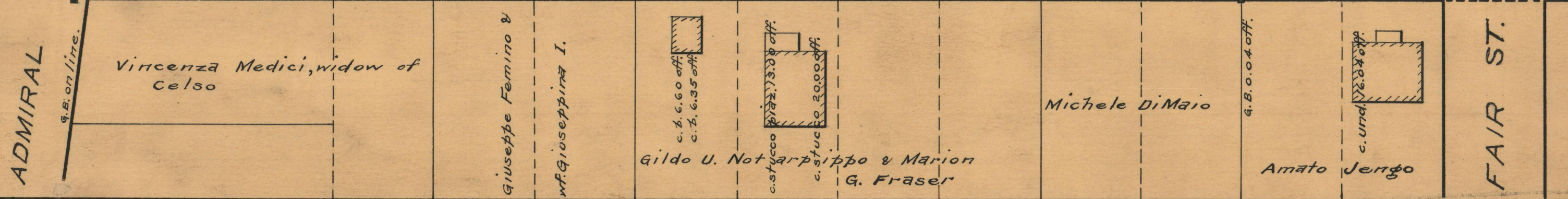
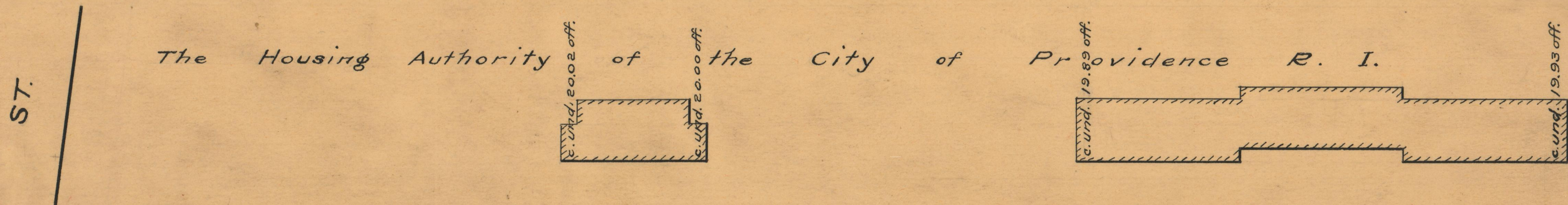
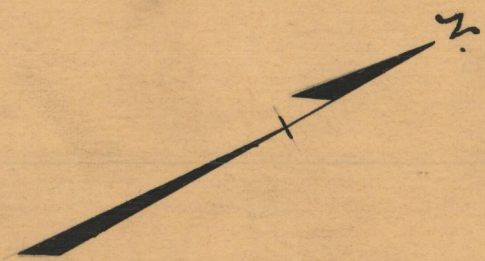
IN TWO SHEETS  
FROM ADMIRAL ST. TO GENERAL ST.  
CITY COUNCIL  
APRIL 2, 1948.

PROVIDENCE, R. I.  
CITY ENGINEER'S OFFICE  
STREET LINE DEPT.

APRIL 4, 1949

060008

SCALE 1" = 40'



OFFICE No. 26791  
DRAWN 87  
C-22