

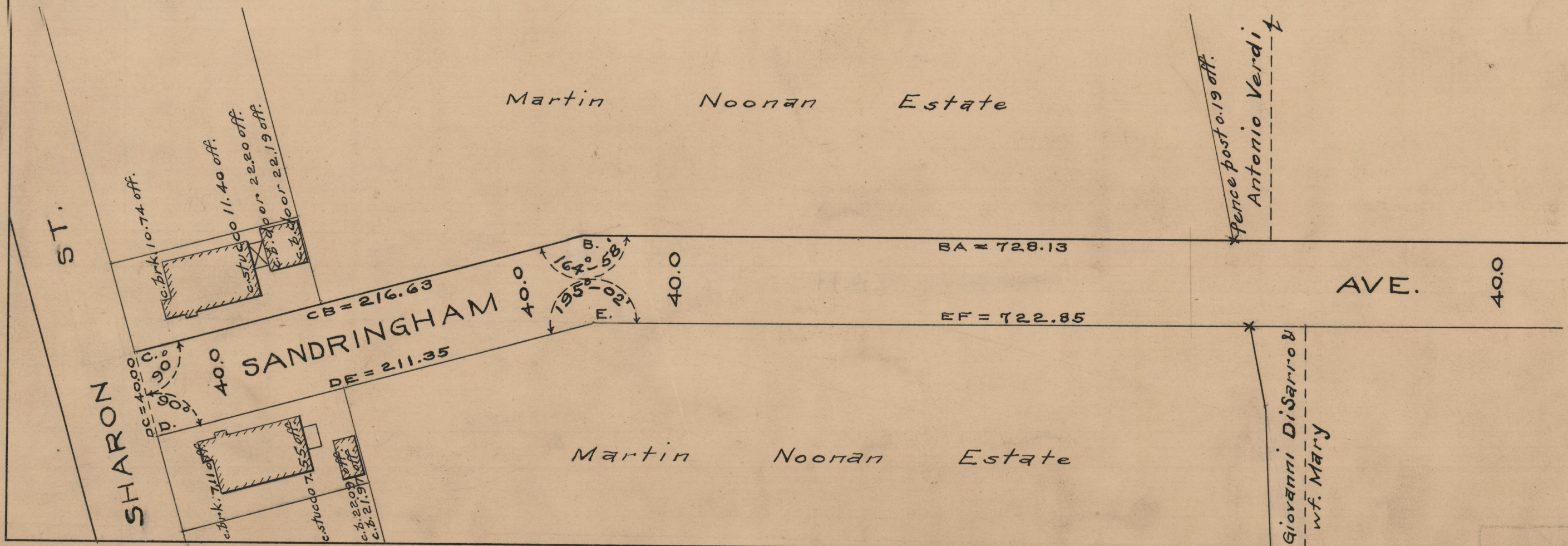
059622

Feb. 14, 1947.

PLAT OF SANDRINGHAM AVENUE

IN TWO SHEETS
FROM RIVER AVE. TO SHARON ST.
BOARD OF ALDERMEN
NOVEMBER 7, 1940

SCALE 1" = 50'



OFFICE NO. 26788
 DRAWER 87
 SHEET C-20