

NOTE:
 THE AREAS DECLARED AS PUBLIC HIGHWAY
 ARE INDICATED BY THE LETTERS FABEF
 AND BCDB.

PLAN OF

CHALKSTONE AVENUE

WIDENING AT DAVIS PARK

CITY COUNCIL

DECEMBER 8, 1945

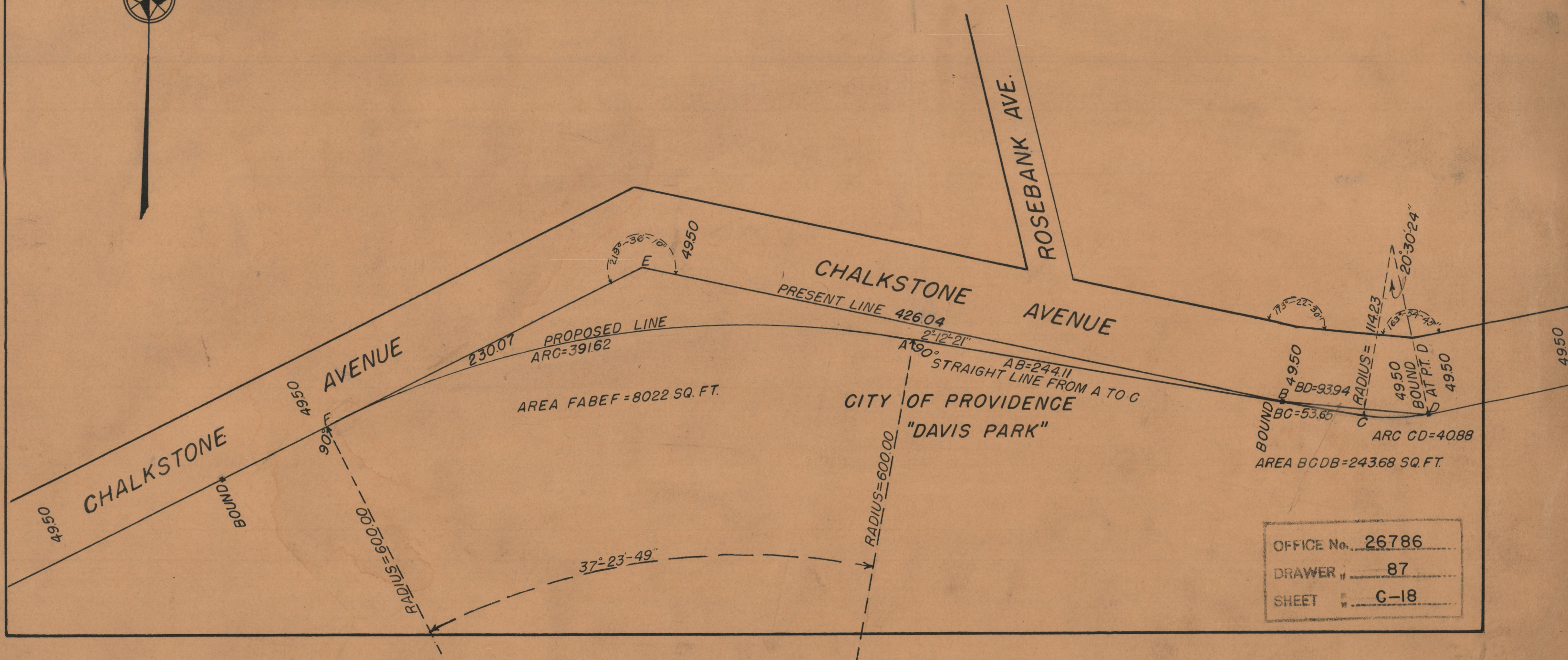
CITY ENGINEER'S OFFICE

STREET LINE DEPT.

JANUARY 2, 1946

059500

SCALE 1"=60'



OFFICE No.	26786
DRAWER	87
SHEET	C-18