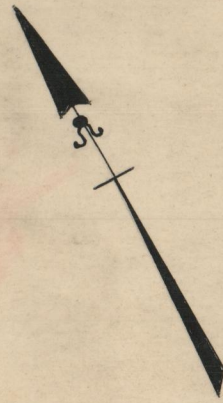


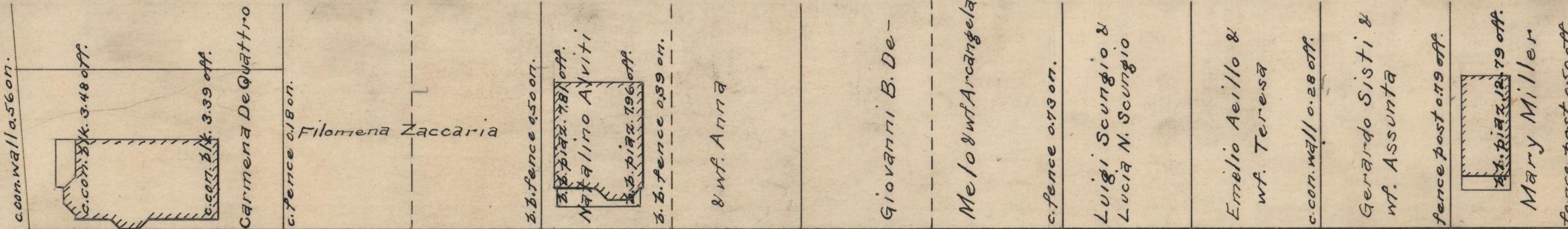
PLAT OF
UNION AVENUE
 FROM SILVER LAKE AVE. TO PLAINFIELD ST.
 IN TWO SHEETS
 CITY COUNCIL
 MAY 14, 1942

PROVIDENCE, R.I.
 CITY ENGINEER'S OFFICE
 STREET LINE DEPT.
 Feb. 4, 1944.
 059386

SCALE 1" = 40'



PLAINFIELD ST.



BA = 1015.18

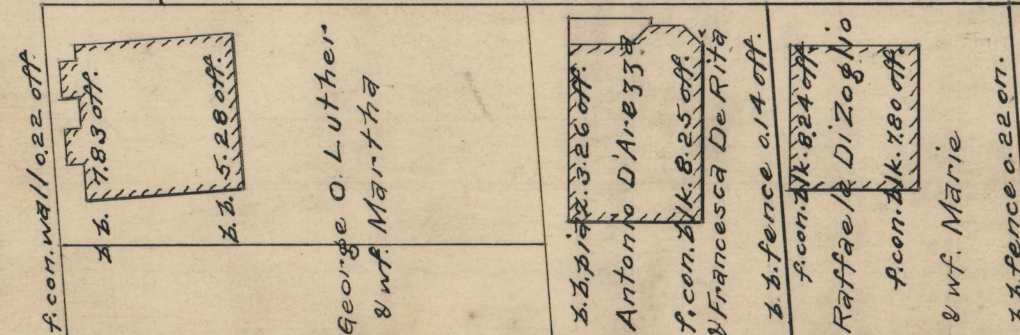
UNION AVENUE

AVENUE

60.00

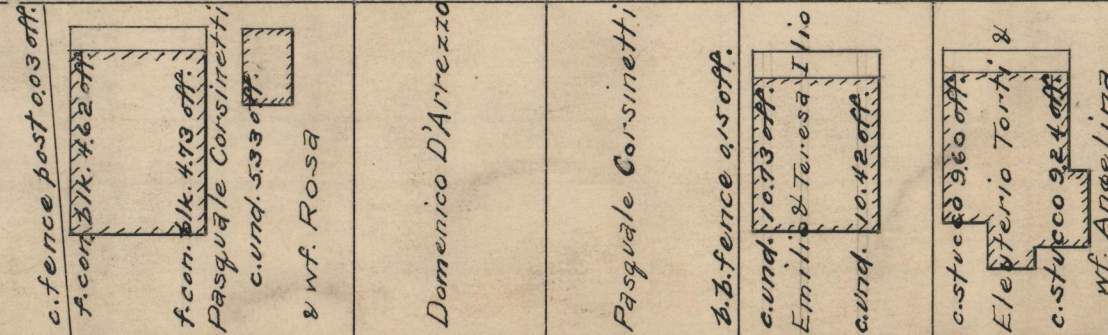
60.00

PLAINFIELD ST.



CD = 961.60

EVELYN ST.



STANTON

OFFICE No. 26784
 DRAWER " 87
 SHEET " C-17