

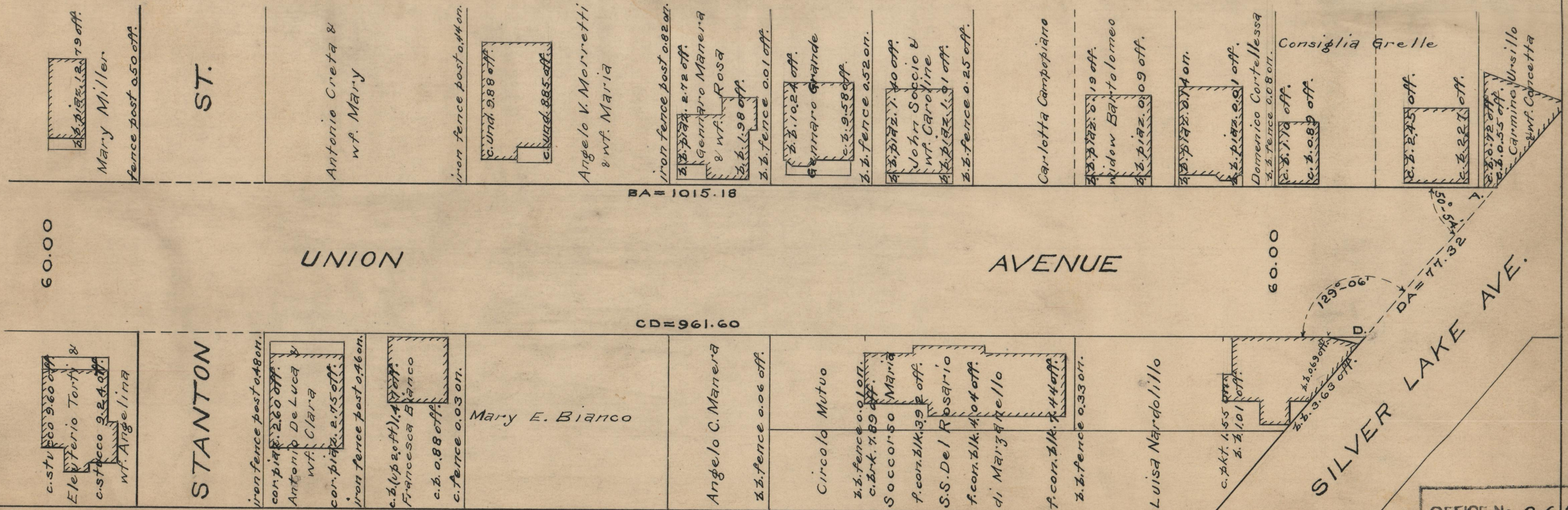
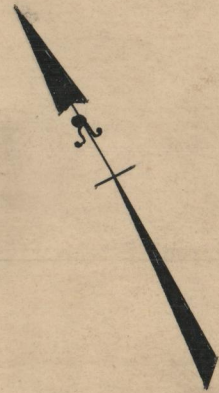
PLAT OF  
**UNION AVENUE**  
 FROM SILVER LAKE AVE. TO PLAINFIELD ST.  
 IN TWO SHEETS  
 CITY COUNCIL  
 MAY 14, 1942

PROVIDENCE, R.I.  
 CITY ENGINEER'S OFFICE  
 STREET LINE DEPT.

Feb. 4, 1944.

059385

SCALE 1"=40'



OFFICE No. 26783  
 DRAWER 87  
 SHEET C-16