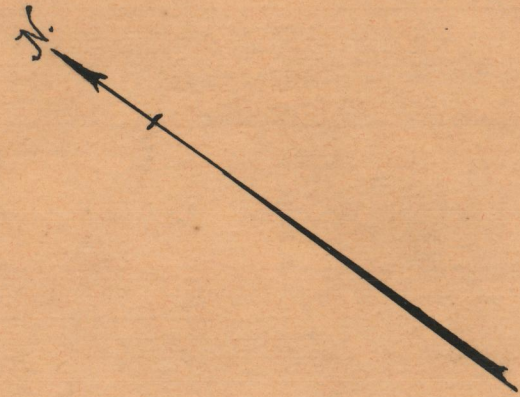
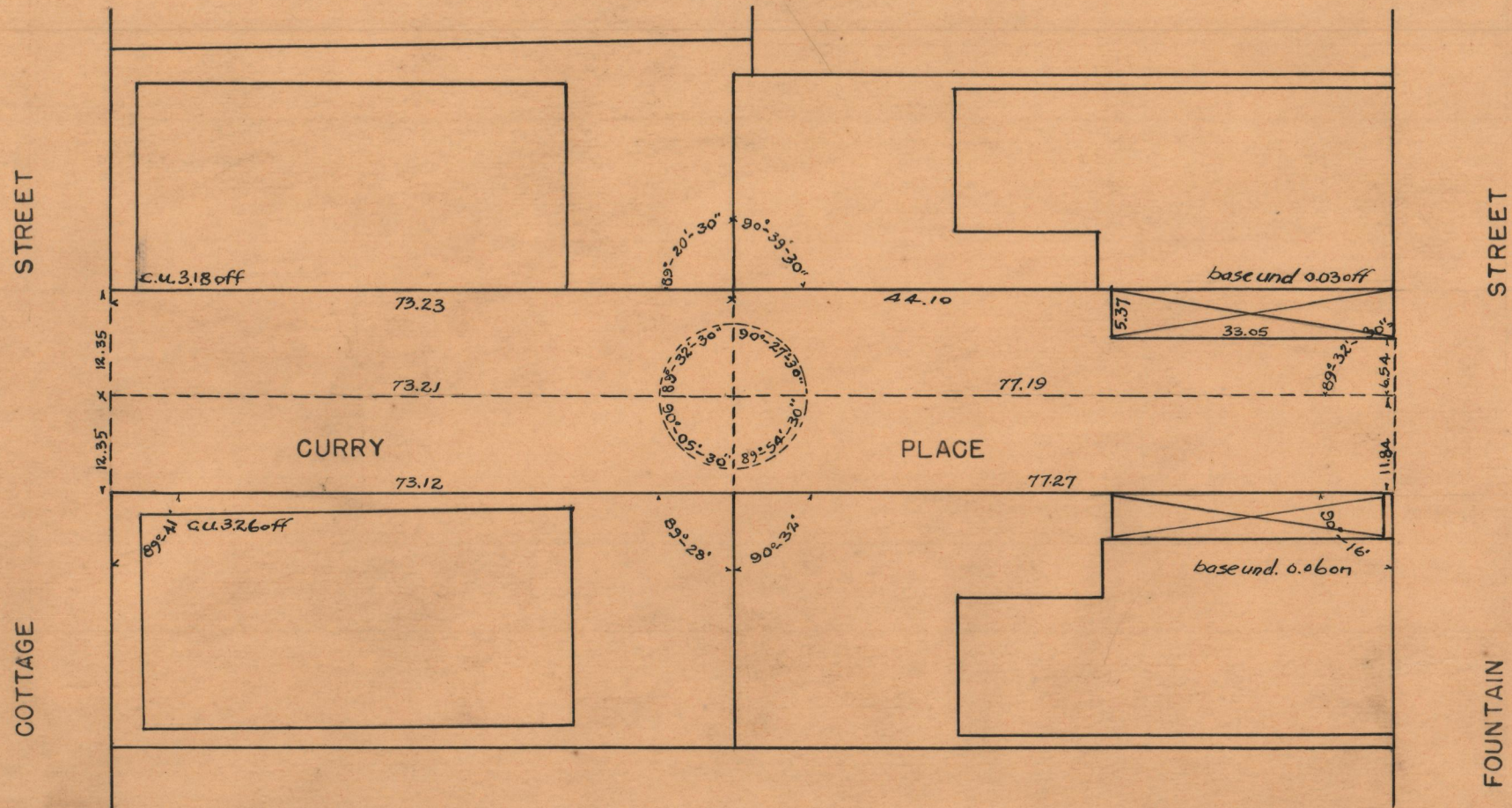


PLAT OF  
**CURRY PLACE**  
 FROM FOUNTAIN ST. TO COTTAGE ST.  
 ABANDONED BY BOARD OF ALDERMEN  
 JANUARY 21, 1937.

PROVIDENCE, R.I.  
 CITY ENGINEER'S OFFICE  
 STREET LINE DEPT.  
 MAY 21, 1943  
 059266



SCALE 1" = 20'



NOTE: INFORMATION ON THIS PLAN WAS TAKEN FROM PLAT ENTITLED "MAP OF LAND BELONGING TO HELEN M. CURRY BY J.A. LATHAM, DEC. 1907" RECORDED IN THE OFFICE OF THE RECORDER OF DEEDS ON PLAT CARD 941.

CITY OF PROVIDENCE	
ENGINEERING DEPARTMENT	
Showing CURRY PLACE, FOUNTAIN ST.	
TO COTTAGE ST.	
Drawn by E. KELLEY	Checked by _____
Scale 1" = 20'	Date MAY 21, 1943
Copies: _____	Asst. Eng. _____
Approved: _____	City Eng. _____

OFFICE No. 26777  
 DRAWER # 87-C  
 SHEET # 10