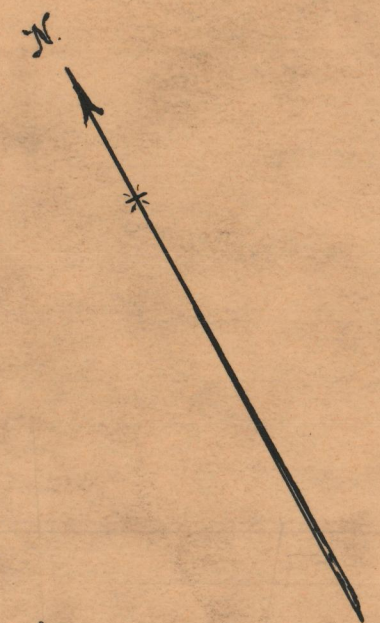


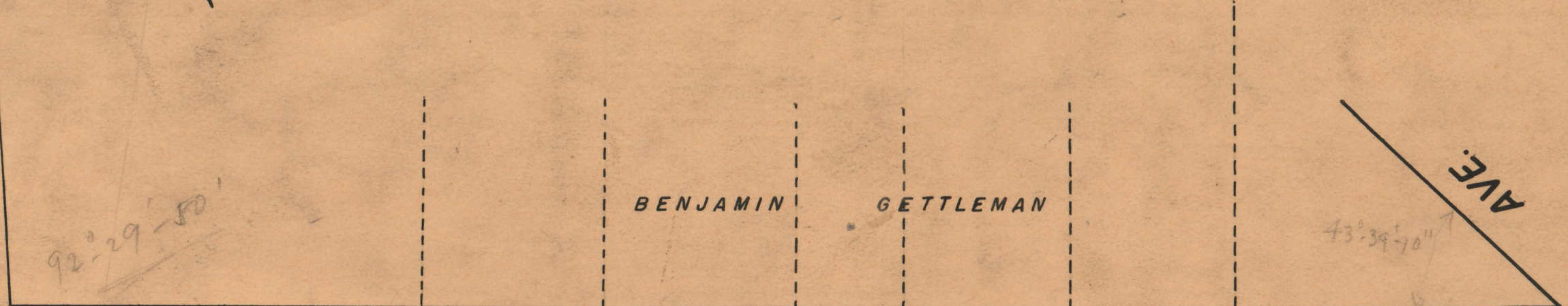
PLAT OF THAT PORTION OF  
**BARBARA STREET**  
 FROM MELISSA ST. TO PONAGANSETT AVE.  
 ABANDONED IN BOARD OF ALDERMEN  
 DECEMBER 17, 1931  
 SCALE 40 FT. PER INCH

PROVIDENCE R.I.  
 CITY ENGINEER OFFICE  
 STREET LINE DEPT.  
 JULY 24, 1942  
 059139

*Handwritten notes:*  
 92° 02' 10"  
 22/93  
 2/1822



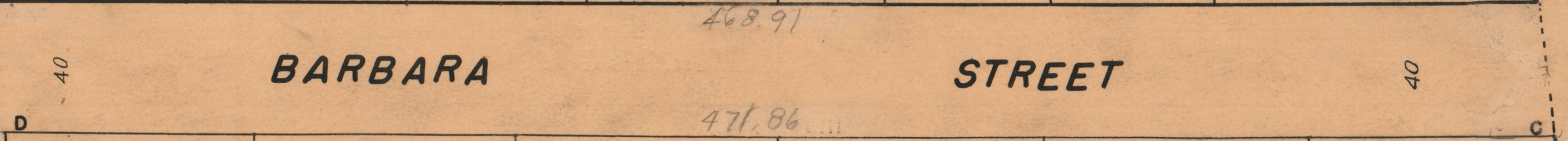
ST.



BENJAMIN GETTLEMAN

*Handwritten:* 43° 39' 10"

**BARBARA STREET**



MELISSA

EDWARD S. GRANDALL

ALDERIC DANSEREAU & WF.

FRED J. SCHOFIELD

ALDERIC DANSEREAU & WF.

COSTANZO RAINONI & WF.

GENNARO PROCACCINI & WF.

PONAGANSETT

OFFICE No.	26762
DRAWER	87
SHEET	B-95