

PROVIDENCE, R. I.
CITY ENGINEER'S OFFICE
STREET LINE DEPT.

Sept. 10, 1936.

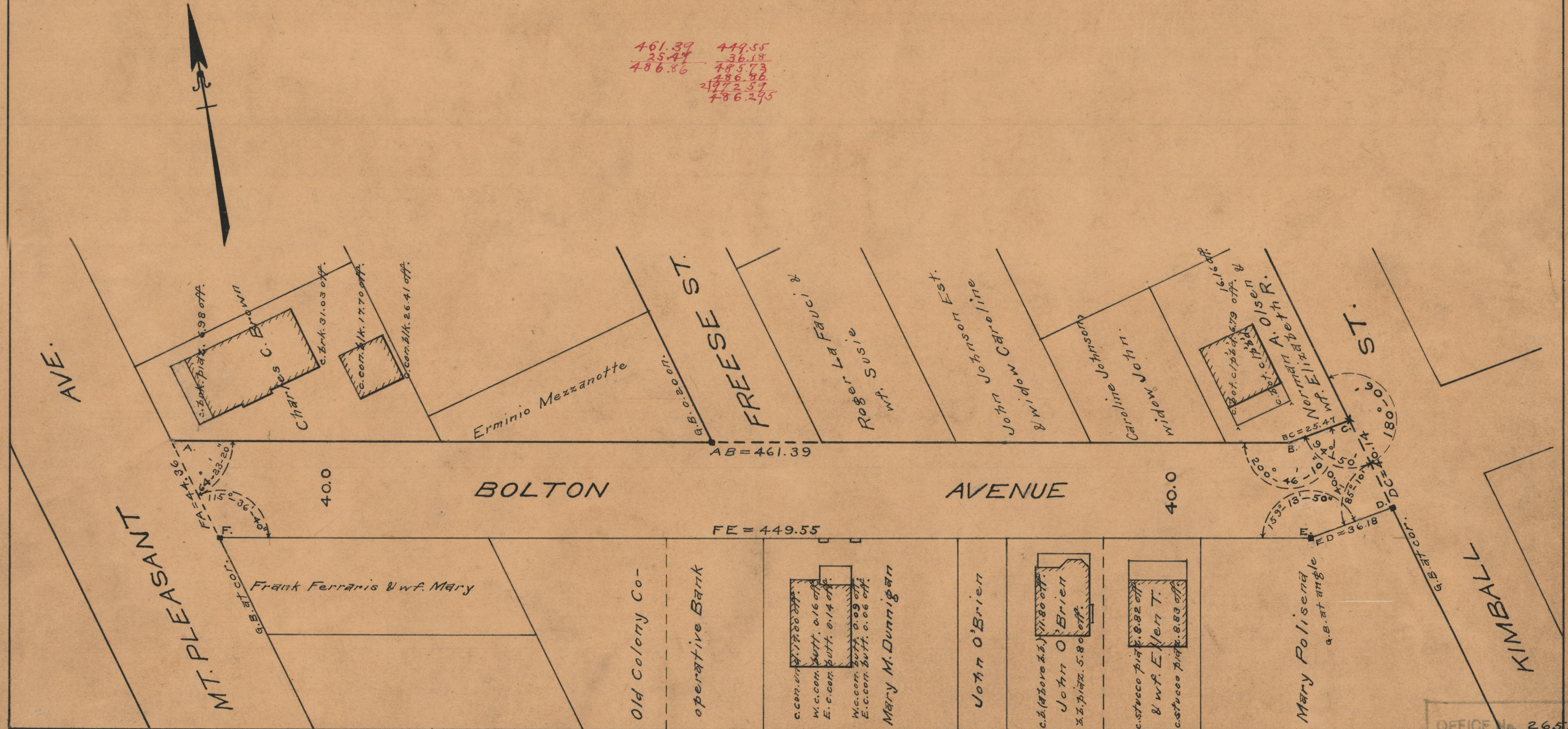
056911

PLAT OF BOLTON AVENUE

FROM MT. PLEASANT AVE. TO KIMBALL ST.
BOARD OF ALDERMEN
JULY 30, 1936.

SCALE 1" = 40'

461.39	449.55
25.47	36.18
486.86	485.73
	486.86
	497.59
	486.295



OFFICE No. 26556
DRAWER 87
SHEET B-9