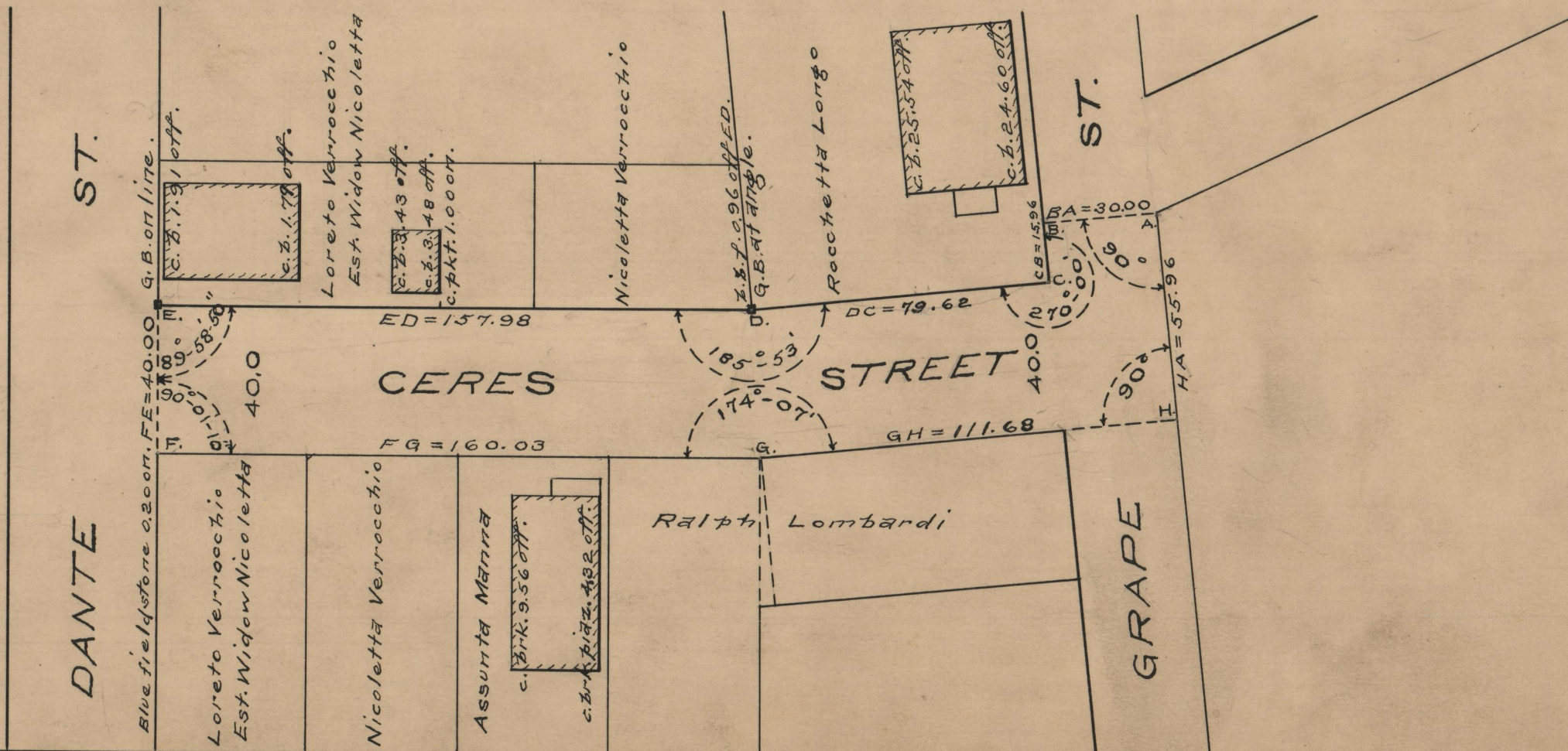


PLAT OF CERES STREET

IN TWO SHEETS
FROM DOUGLAS AVE. TO DANTE ST.
CITY COUNCIL
APRIL 21, 1941.

PROVIDENCE, R.I.
CITY ENGINEER'S OFFICE
STREET LINE DEPT.
May 2, 1941.
058891

SCALE 1" = 40'



OFFICE No.	26747
DRAWER	87
SHEET	B-80