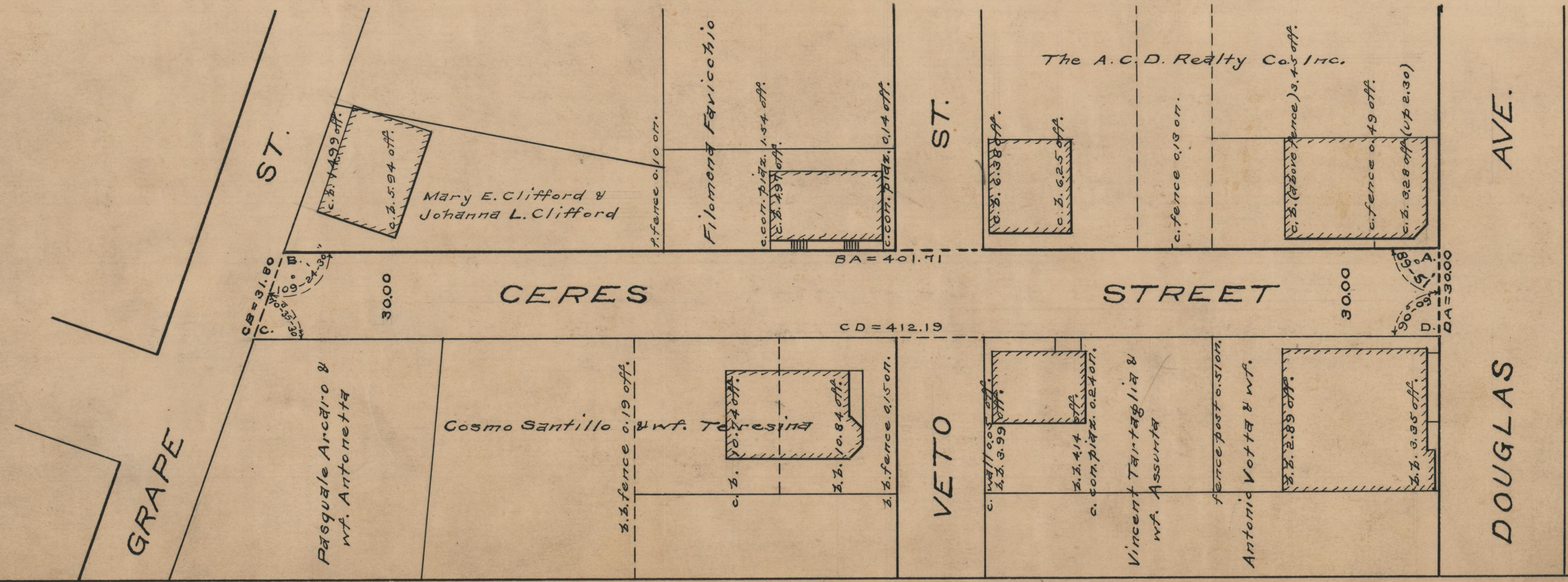


PLAT OF CERES STREET

IN TWO SHEETS
FROM DOUGLAS AVE. TO DANTE ST.
CITY COUNCIL
APRIL 21, 1941.

PROVIDENCE, R.I.
CITY ENGINEER'S OFFICE
STREET LINE DEPT.
May 2, 1941.
058890

SCALE 1" = 40'



OFFICE No.	26746
DRAWER	87
SHEET	B-79