

PLAT OF WENDELL STREET

FROM THE EAST LINE OF ELLERY STREET
TO HUNTINGTON AVENUE

BOARD OF ALDERMAN

DECEMBER 5, 1940

SCALE 1" = 40'

PROVIDENCE, R.I.
CITY ENGINEERS' OFFICE
STREET LINE DEPT.

Mar. 18, 1941

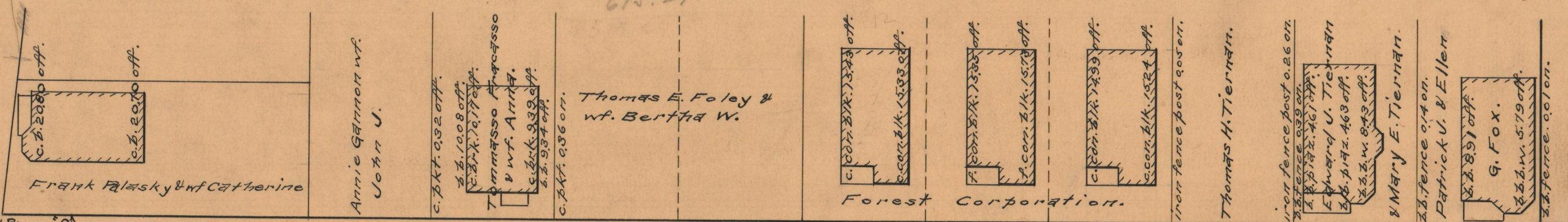
058859



612.72
617.87

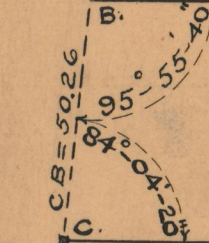
21230.59
615.295

HUNTINGTON
AVE.



BA = 612.72

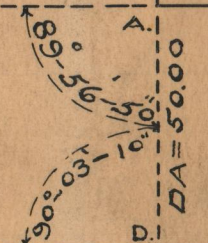
WENDELL STREET



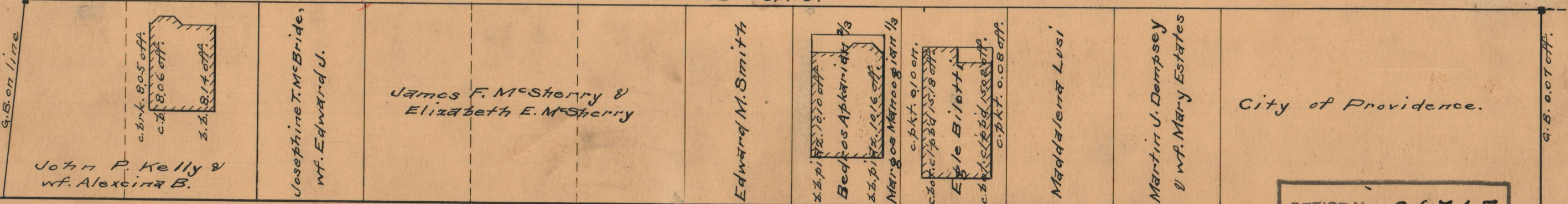
50.0

50.0

CD = 617.87



HUNTINGTON



ELLERY
ST.

OFFICE No. 26745
DRAWER 87
SHEET B-78