

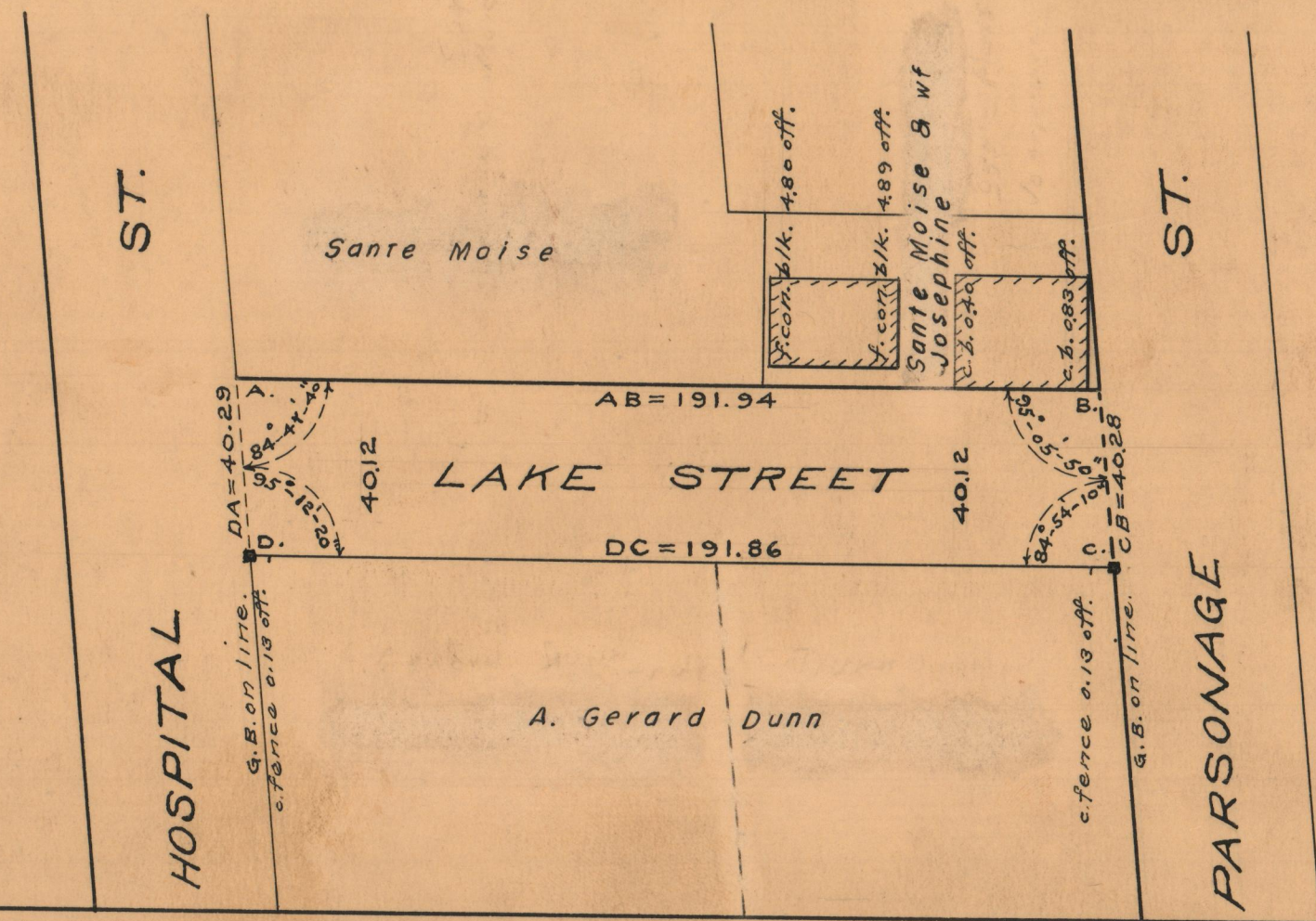
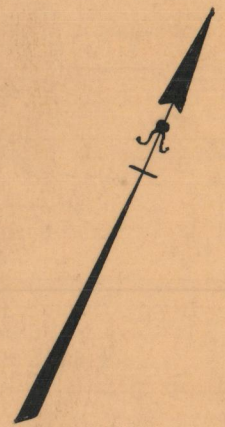
PROVIDENCE, R.I.
CITY ENGINEER'S OFFICE
STREET LINE DEPT.

Feb. 14, 1941.

058826

PLAT OF
LAKE STREET
FROM HOSPITAL STREET TO PARSONAGE STREET
CITY COUNCIL
MARCH 5, 1951.

SCALE 1" = 40'



OFFICE No. 26 741

DRAWER : 87

SHEET : B-75