

# PLAT OF RANKIN AVENUE

FROM PLEASANT VALLEY PARKWAY  
TO WHITFORD AVENUE  
BOARD OF ALDERMEN  
DECEMBER 5, 1940

SCALE 1" = 50'

CITY ENGINEER'S OFFICE  
STREET LINE DEPT.

Feb. 1, 1941.

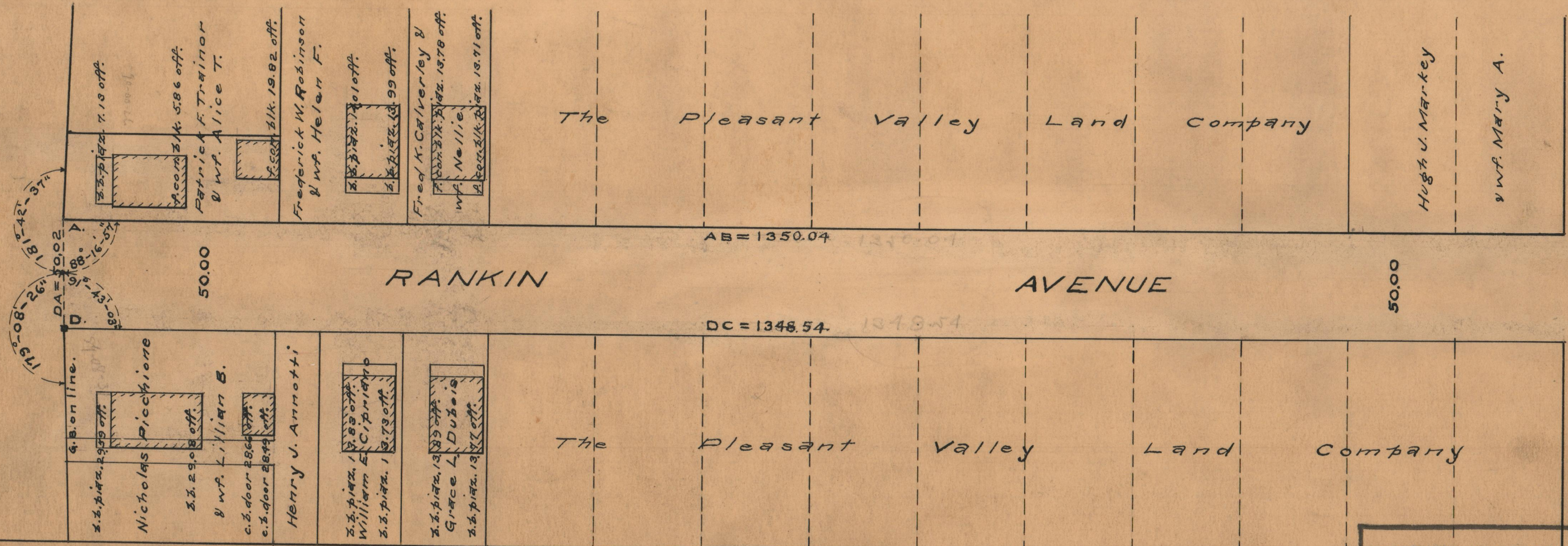
058820



PLEASANT VALLEY PARKWAY

AVE.

MOORLAND



OFFICE NO. 26738

DRAWER 87

SHEET B-72