

PLAT OF
WHITFORD AVENUE

FROM ACADEMY AVENUE TO THE RANGE OF
 THE WESTERLY LINE OF HOME AVENUE

BOARD OF ALDERMEN
 NOVEMBER 7, 1940

SCALE 1" = 40'

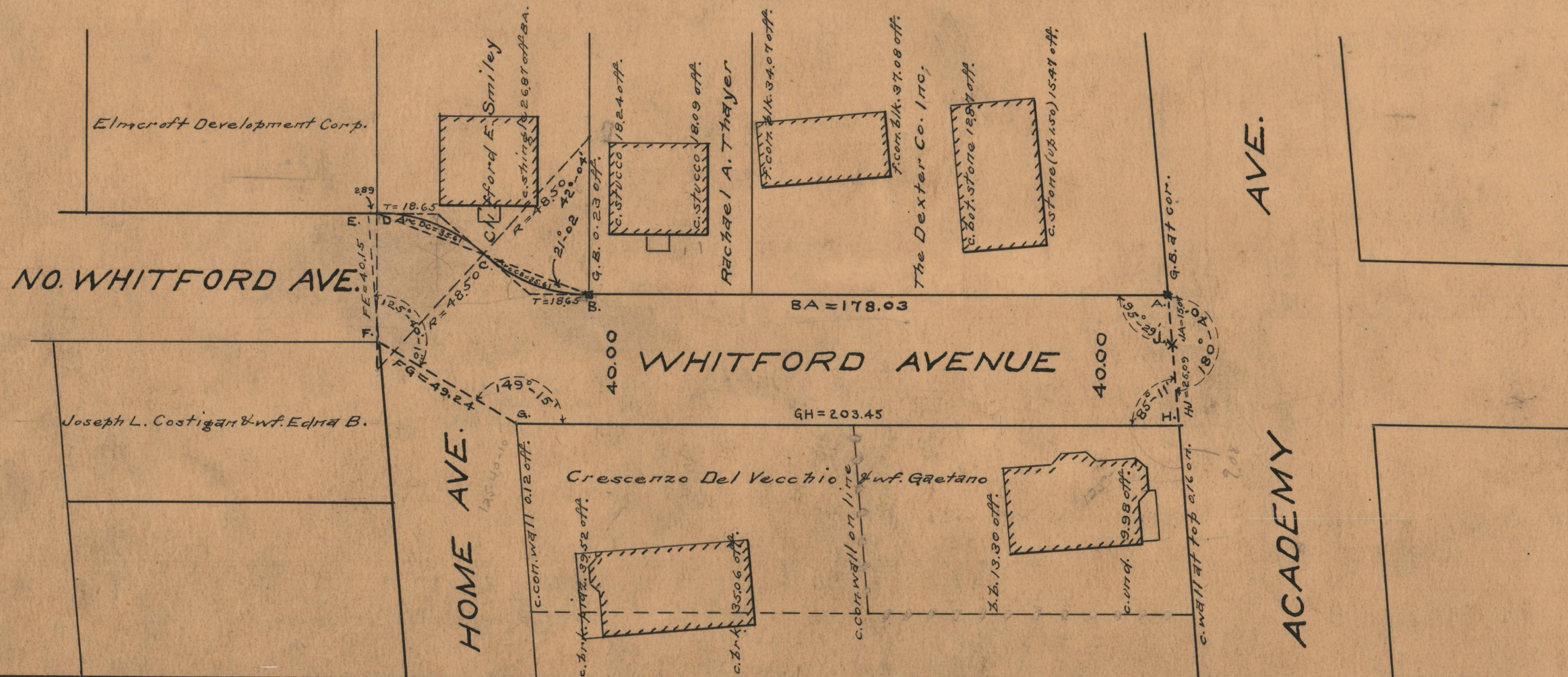
CITY ENGINEER'S OFFICE
 STREET LINE DEPT.

Jan. 29, 1941.

058819



Handwritten calculations:
 35.41
 35.41
 177103
 207.49
 400.24
 200.12
 232.49
 202.64
 249.25
 200.12
 200.12
 200.12



OFFICE No. 26737
 DRAWER 87
 SHEET B-71