

PROVIDENCE, R.I.
CITY ENGINEER'S OFFICE
STREET LINE DEPT.

Jan. 23, 1941.

058817

* PLAT OF NORTH WHITFORD AVENUE

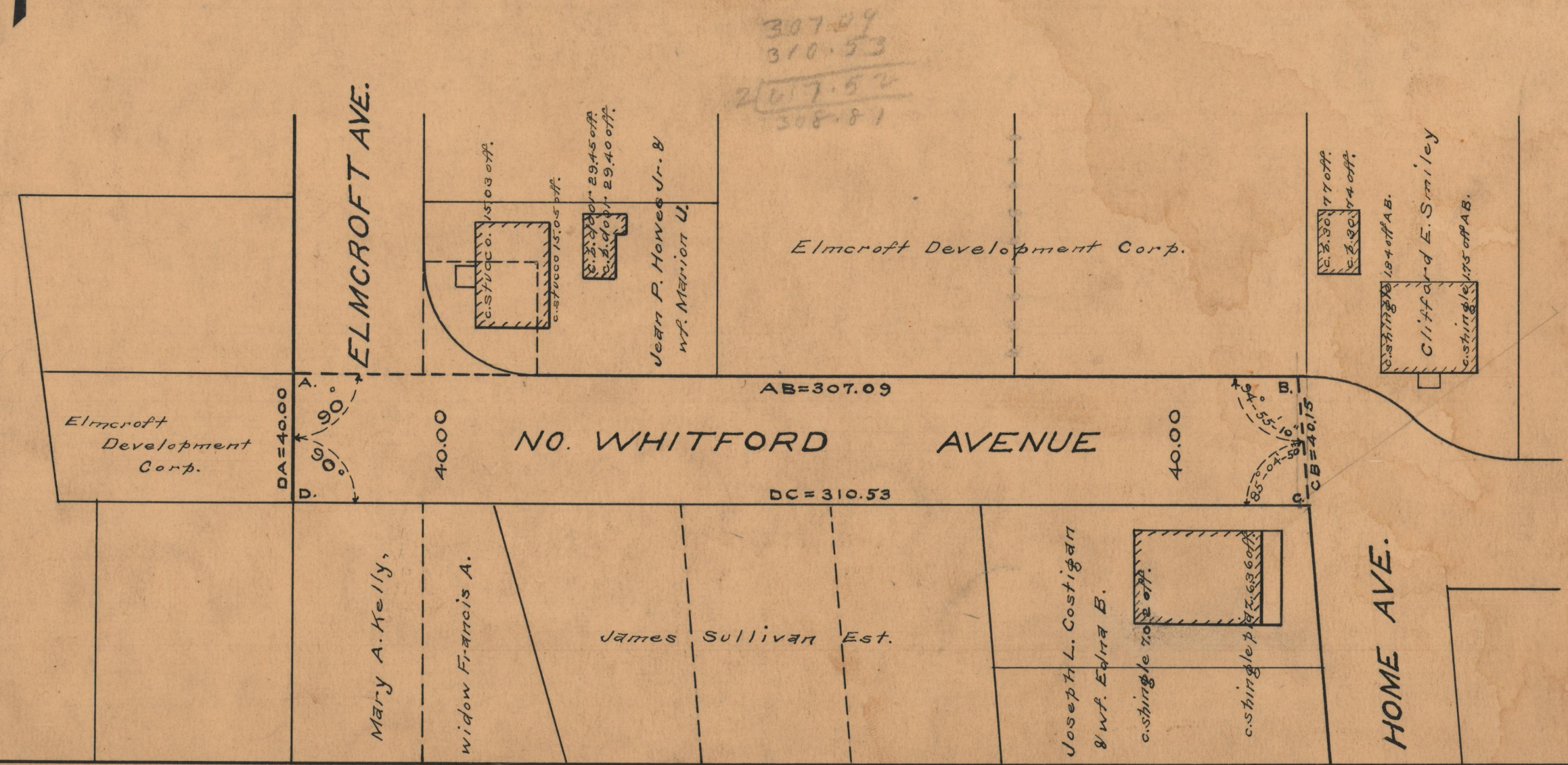
FROM THE WESTERLY LINE OF ELMCROFT AVENUE TO THE
RANGE OF THE WESTERLY LINE OF HOME AVENUE

BOARD OF ALDERMEN

NOVEMBER 7, 1940

SCALE 1" = 40'

* CHANGED TO ELMCROFT AVENUE BY C.C.R. 624 AUG. 11, 1950.



OFFICE NO.	26736
DRAWER	87
SHEET	B-70