

# CRARY STREET

IN TWO SHEETS

FROM ALLENS AVE. TO THE HARBOR LINE

DECEMBER 5, 1940

PROVIDENCE, R.I.  
CITY ENGINEER'S OFFICE  
STREET LINE DEPT.

Dec. 7, 1940.

058793

*In B. 274*

SCALE 1" = 40'



*R. I. Hospital Trust Co. Tr. 1/4 William C. Peirce 2/6, Elizabeth S. Wood 1/6, Peirce H. Breerton 1/6,  
Thomas J. H. Peirce 1/2, Wm. C. Peirce Jr. 1/2, Emma I. Barrows 1/2, & Ruth P. Smith 1/2.*

*c 78" diam  
Sanitary Sewer*

AB = 1007.38

40.12

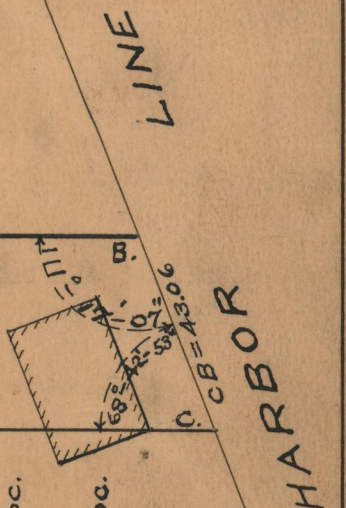
CRARY

*Abandoned  
Oct 22, 1941 - CCR 599*

STREET

40.12

DC = 1011.57



*R. I. Hospital Trust Co. Tr. 1/4 William C. Peirce 2/6, Elizabeth S. Wood 1/6, Peirce H. Breerton 1/6,  
Thomas J. H. Peirce 1/2, William C. Peirce Jr. 1/2, Emma I. Barrows 1/2, & Ruth P. Smith 1/2.*

*cor. 21.79 on DC.*

*cor. 28.87 on DC.*