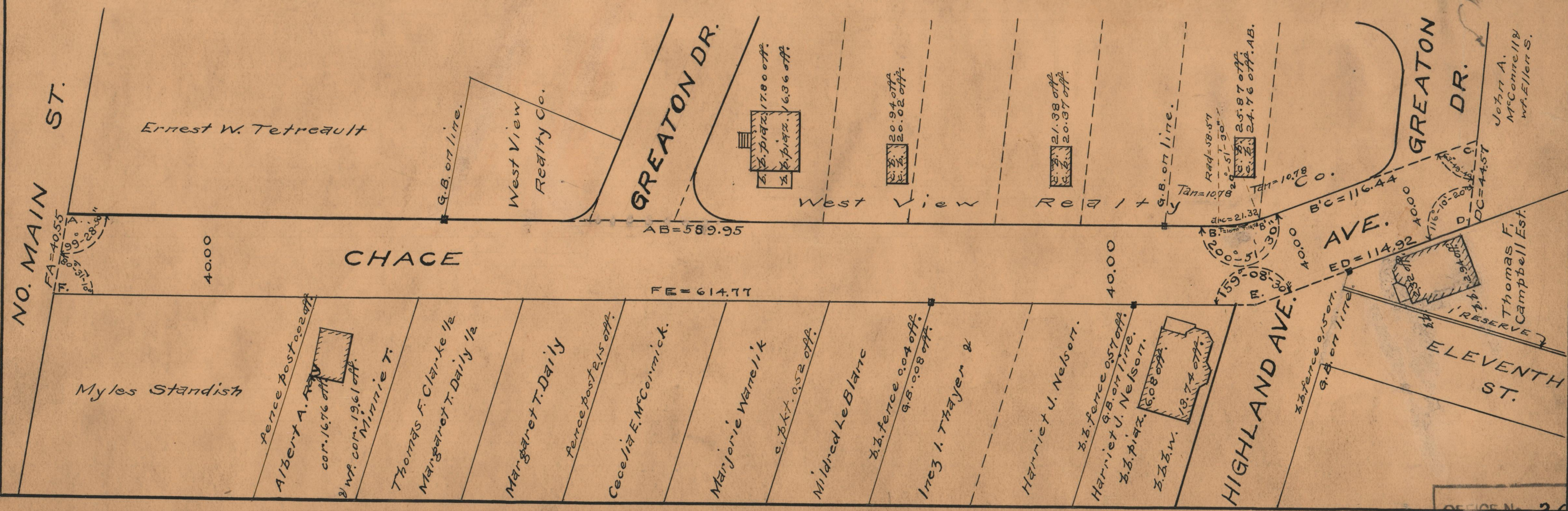


PROVIDENCE, R.I.
CITY ENGINEER'S OFFICE
STREET LINE DEPT.
Nov. 1, 1940.

058761

PLAT OF
CHACE AVENUE
FROM NORTH MAIN STREET TO THE RANGE OF THE
EASTERLY LINE OF THE WEST VIEW PLAT
BOARD OF ALDERMEN
OCTOBER 17, 1940

SCALE 1" = 50'



Easterly line of the West View Plat.

John A. McCormick
w/ Ellen S.

Thomas F. Campbell Est.

ELEVENTH ST.