

PLAT OF
YARMOUTH STREET

FROM RESERVOIR AVE. TO NARRAGANSETT AVE.

BOARD OF ALDERMEN

JULY 6, 1939.

SCALE 1" = 40'

PROVIDENCE, R.I.
 CITY ENGINEER'S OFFICE

STREET LINE DEPT.

Sept. 14, 1939.

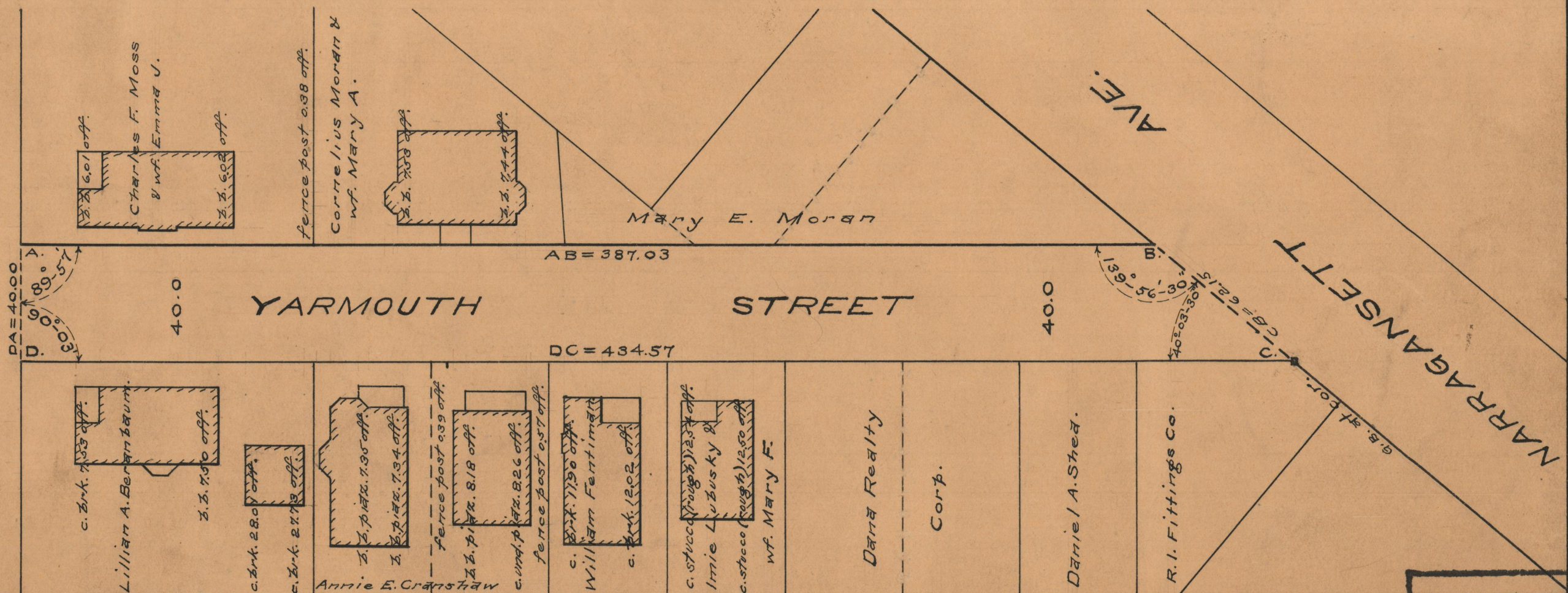
058158

387.03
 434.57
 2) 821.60
 410.30



RESERVOIR AVE.

RESERVOIR AVE.



OFFICE No. 26704
 DRAWER 87
 SHEET B-57