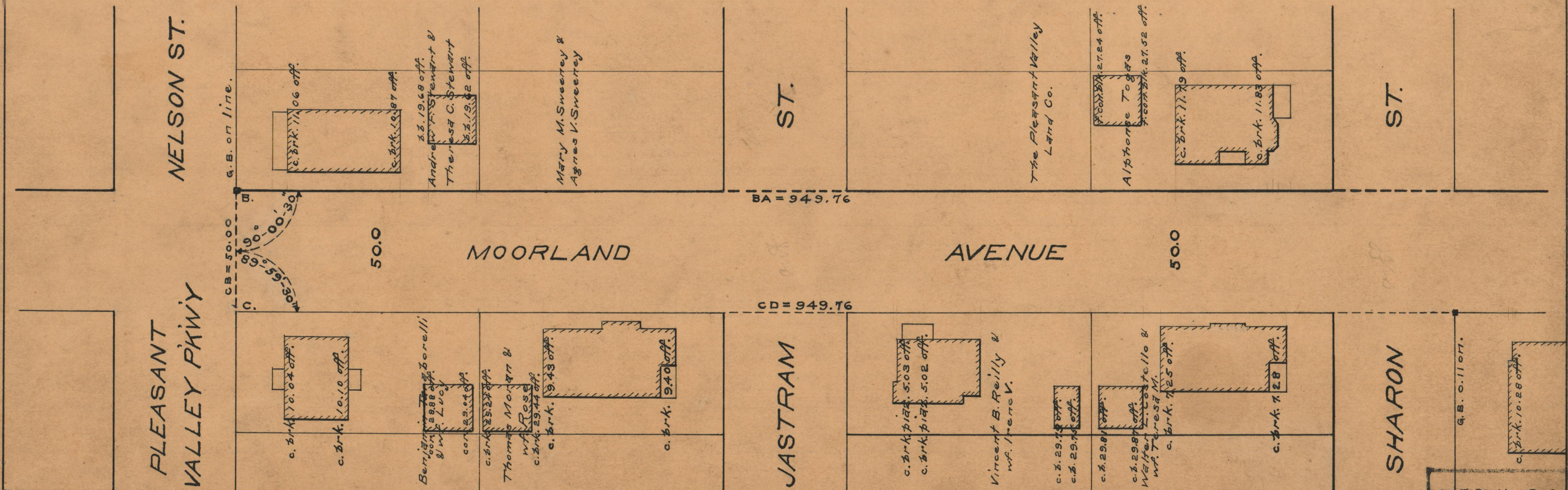


PLAT OF  
**MOORLAND AVENUE**  
 IN TWO SHEETS  
 FROM RIVER AVE. TO PLEASANT VALLEY PARKWAY  
 BOARD OF ALDERMEN  
 MAY 19, 1938.

PROVIDENCE, R.I.  
 CITY ENGINEER'S OFFICE  
 STREET LINE DEPT.  
 Feb. 24, 1939.  
 057932

SCALE 1" = 40'



OFFICE No. 26690  
 DRAWN BY 87  
 SHEET B-55