

PLAT OF  
**MOORLAND AVENUE**  
 IN TWO SHEETS  
 FROM RIVER AVE. TO PLEASANT VALLEY PARKWAY  
 BOARD OF ALDERMEN  
 MAY 19, 1938.

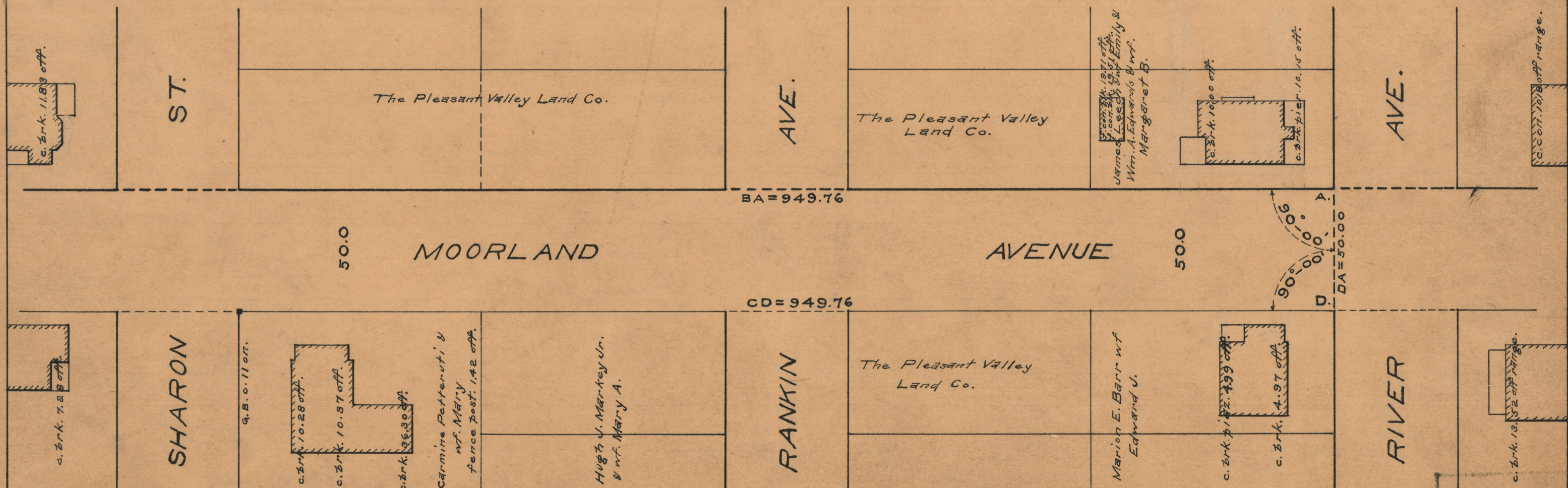
PROVIDENCE, R.I.  
 CITY ENGINEER'S OFFICE  
 STREET LINE DEPT.

Feb. 24, 1939.

057931

SCALE 1" = 40'

949.76  
 - 106.00  
 843.76



OFFICE No 26689  
 DRAWN BY 87  
 SHEET B-54