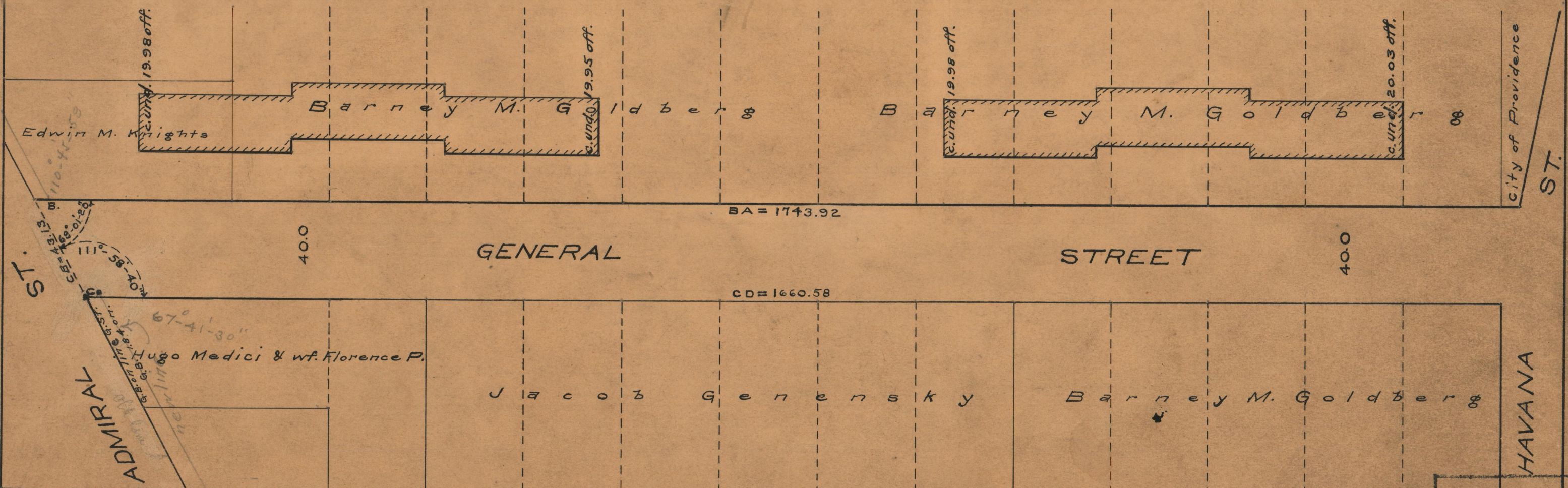


PLAT OF GENERAL STREET

IN THREE SHEETS
FROM HAZAEL ST. TO ADMIRAL ST.
BOARD OF ALDERMEN
JUNE 16, 1938.

PROVIDENCE, R.I.
CITY ENGINEER'S OFFICE
STREET LINE DEPT.
Jan. 26, 1939.
057903

SCALE 1"=40'



OFFICE No. 26686
DRAWER " 87
SHEET " B-51