

PLAT OF
FARM STREET
FROM MT. PLEASANT AVE. TO KIMBALL ST.
BOARD OF ALDERMEN

CITY ENGINEER'S OFFICE
STREET LINE DEPT.

Jan. 19, 1939.

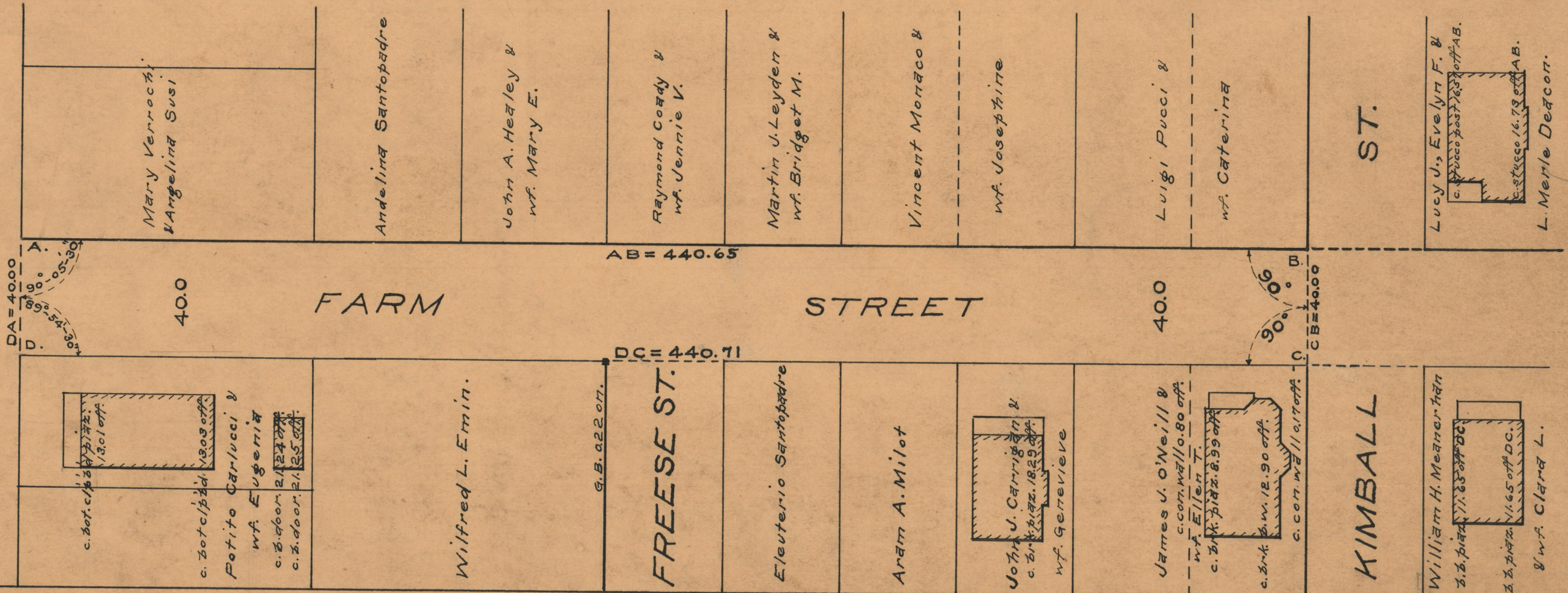
057895

SCALE 1" = 40'



440.65
440.71
2) 881.36
440.68

MT. PLEASANT AVE.



26679

87

B-48