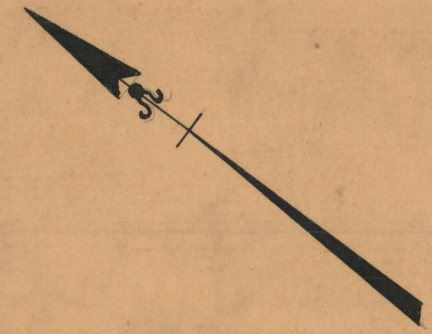


PLAT OF  
**PARKSIDE DRIVE**  
FROM PARK AVE. NORTHERLY AND EASTERLY  
TO THE PORTION ALREADY RECEIVED  
BOARD OF ALDERMEN  
JUNE 16, 1938.

PROVIDENCE, R.I.  
CITY ENGINEERS OFFICE  
STREET LINE DEPT.  
Dec. 9, 1938.  
057879

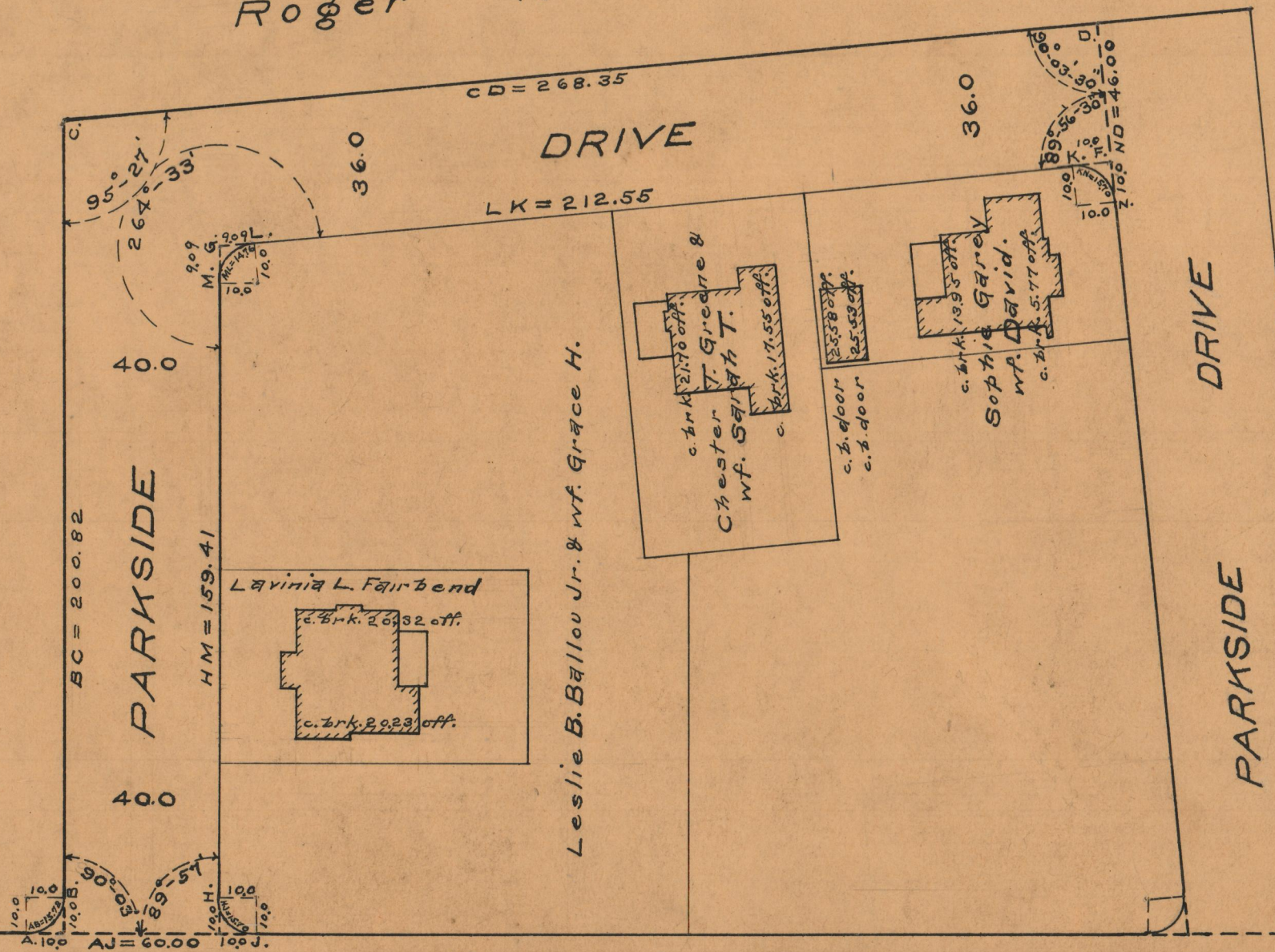
SCALE 1" = 40'

10.  
200.82  
268.35  
169.41  
9.09  
9.09  
222.55  
2889.31  
444.655



Roger Williams Park

Leslie B. Ballou Jr. & wf. Grace H.



PARK AVENUE

OFFICE No. 26676  
DRAWER 87  
SHEET B-45