

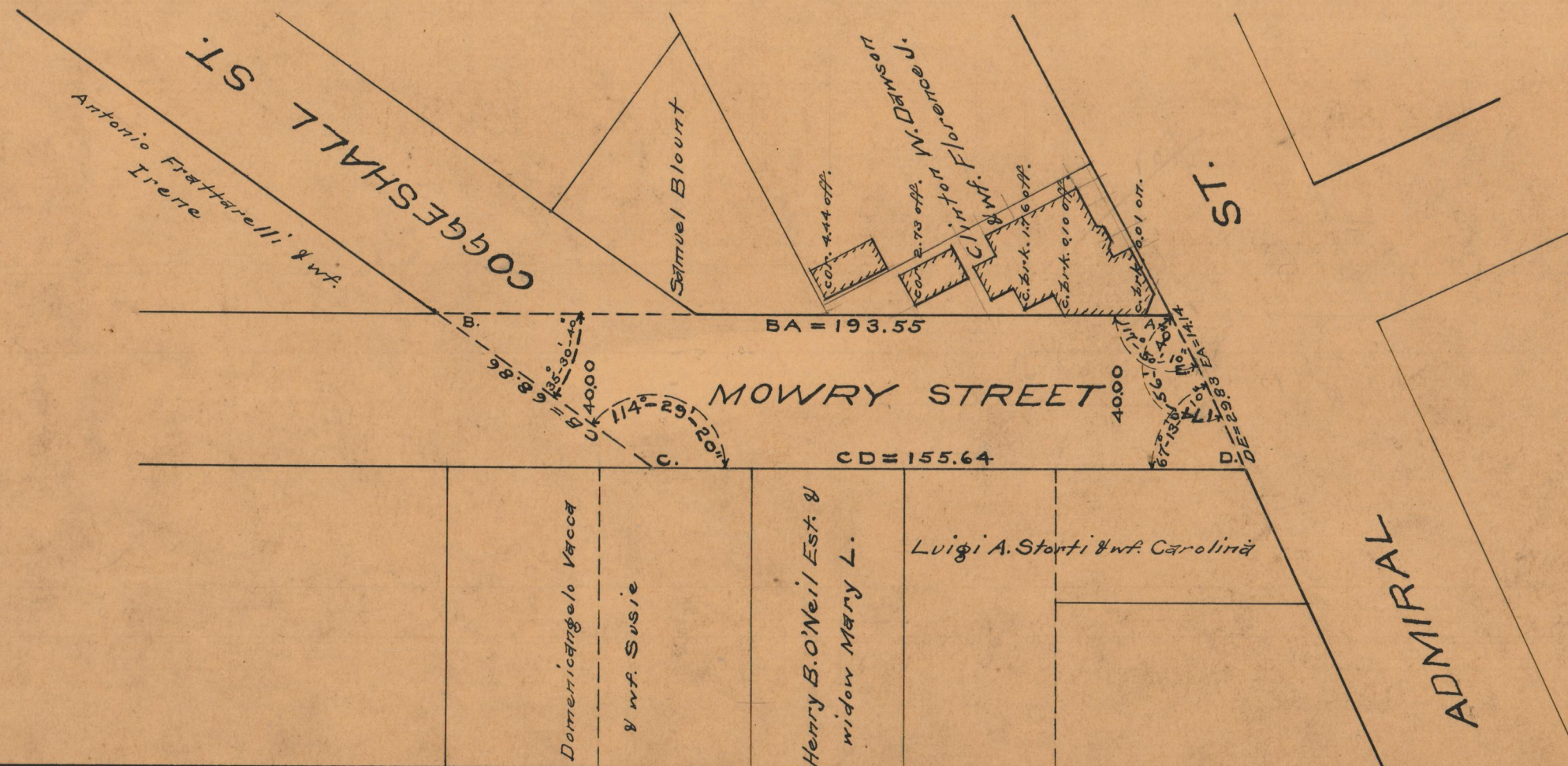
PLAT OF MOWRY STREET

FROM ADMIRAL ST. TO THE RANGE OF THE
SOUTHERLY LINE OF COGGESHALL ST.
BOARD OF ALDERMEN
JUNE 16, 1938.

PROVIDENCE, R.I.
CITY ENGINEER'S OFFICE
STREET LINE DEPT.
June 28, 1938.
057728

SCALE 1" = 40'

193.55
155.64
2) 349.19
174.595



OFFICE No.	26657
DRAWER	87
SHEET	B-44