

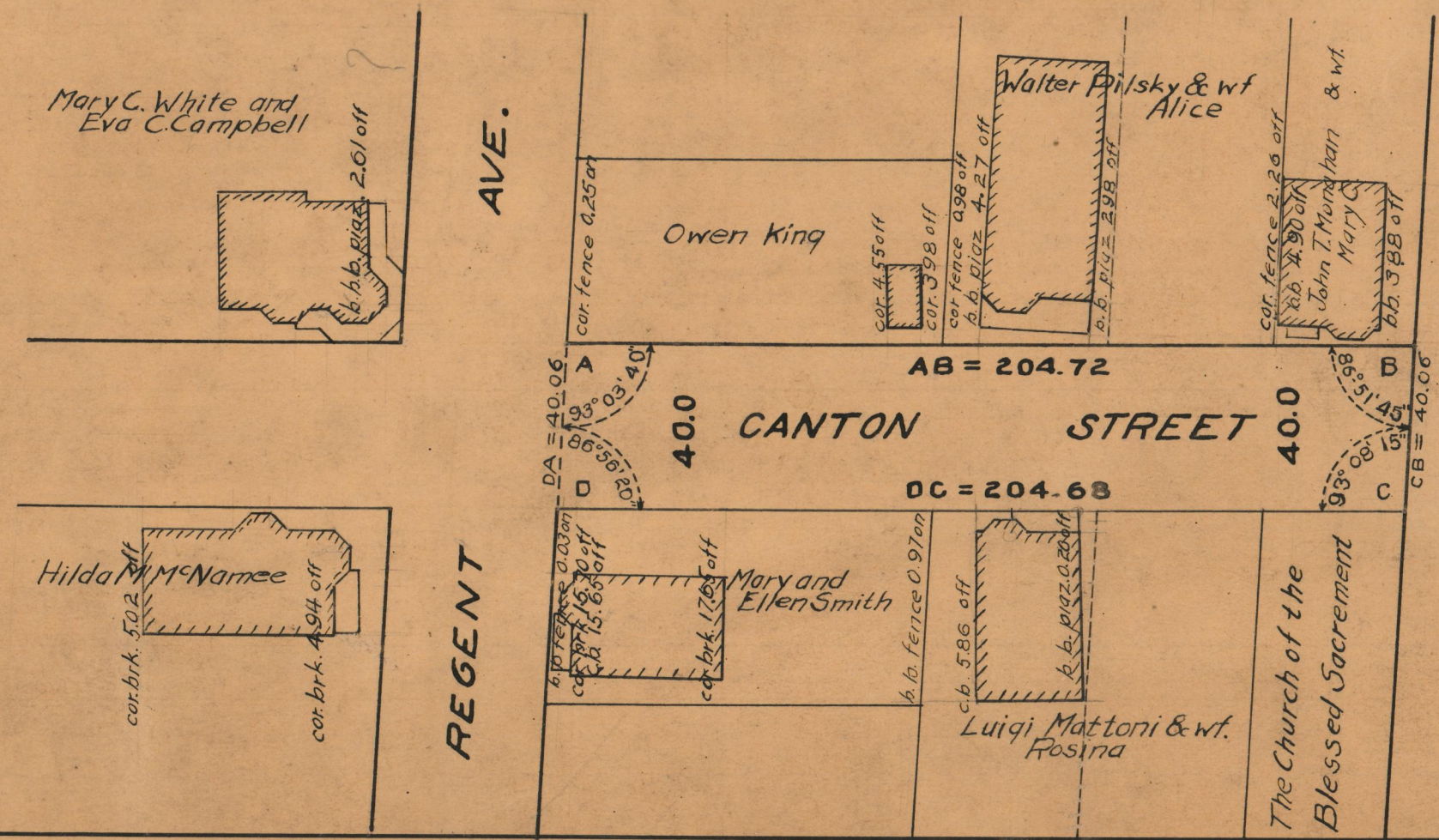
PROVIDENCE, R.I.
CITY ENGINEER'S OFFICE
STREET LINE DEPT.
June 27, 1938
057725

CANTON STREET

FROM REGENT AVENUE TO ITS SOUTHERLY TERMINATION
BOARD OF ALDERMEN
JUNE 16, 1938

SCALE 1" = 40'

204.70



OFFICE No. 26656
DRAWER 87
SHEET B-43