

APRIL 21, 1938

SHEET TWO

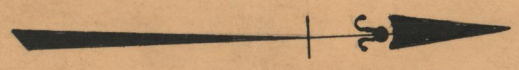
PROVIDENCE, R.I.  
CITY ENGINEER'S OFFICE  
STREET LINE DEPT.  
May 28, 1938.  
057679

PLAT OF  
**ROWLEY STREET**

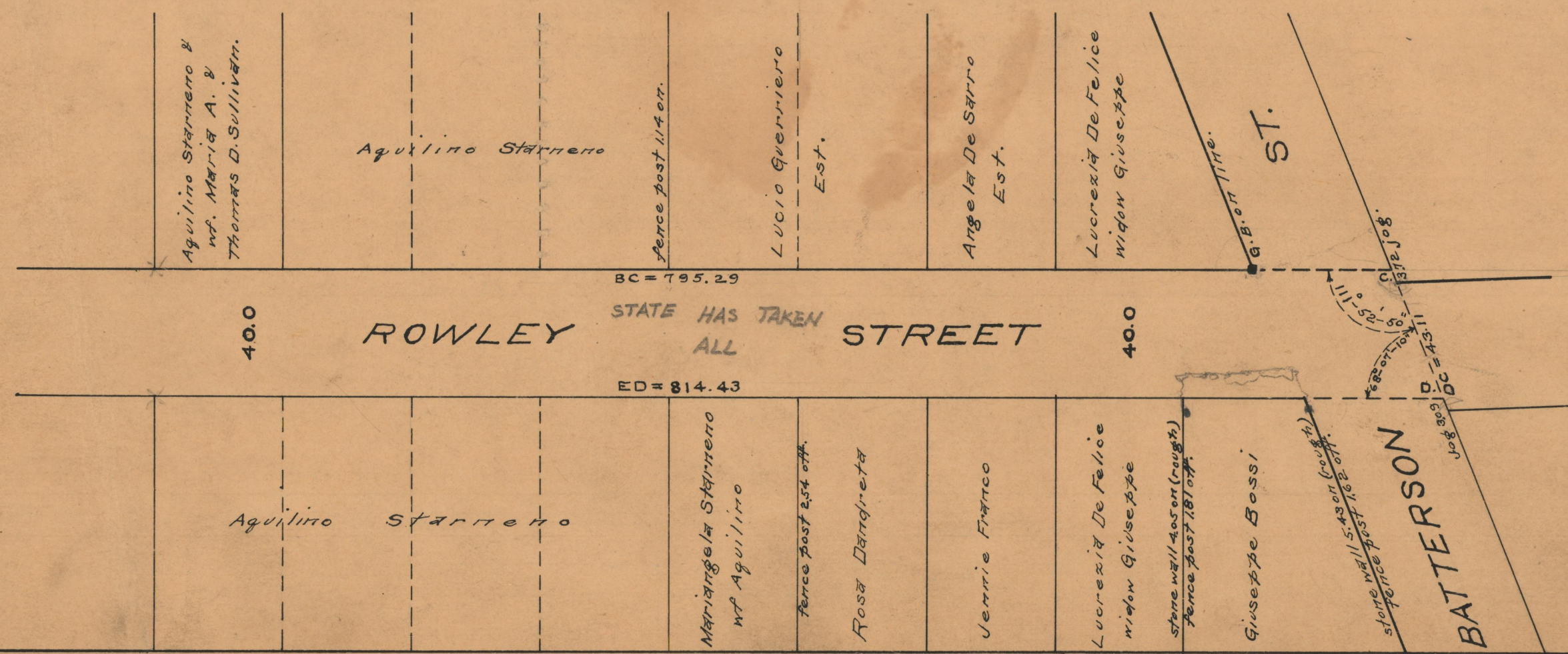
FROM  
THE SOUTHERLY LINE OF GERARDI AVE  
TO THE NORTHERLY LINE OF BATTERSON AVE  
IN TWO SHEETS  
BOARD OF ALDERMEN  
APRIL 21, 1938

Scale 1" = 40'

176  
157  
317  
3155



P87



OFFICE No. 26651  
DRAWER 87  
SHEET B-42