

PROVIDENCE, R.I.
CITY ENGINEER'S OFFICE
STREET LINE DEPT.
May 28, 1938.
057678

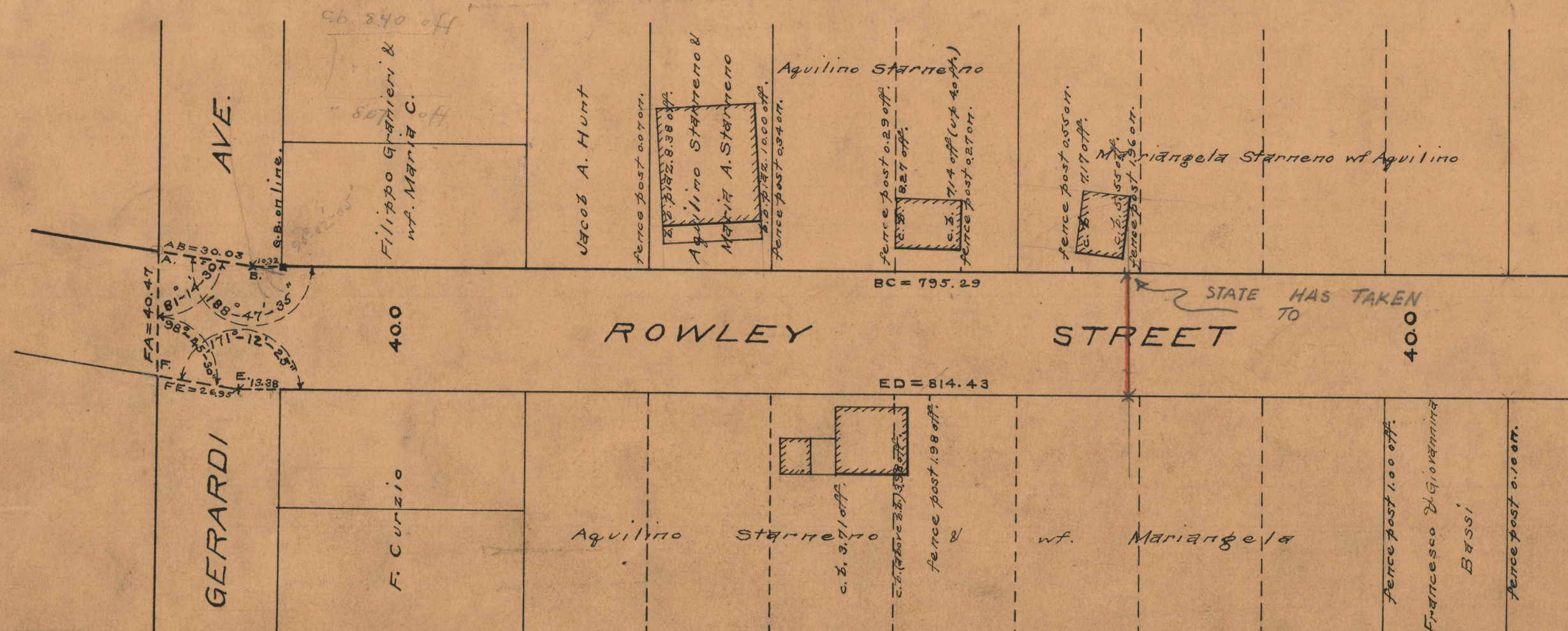
PLAT OF ROWLEY STREET

FROM
THE SOUTHERLY LINE OF GERARDI AVE
TO THE NORTHERLY LINE OF BATTERSON AVE
IN TWO SHEETS
APRIL 21, 1938

SCALE 1" = 40'

30.03
795.29
26.95
814.43
1666.70
833.35

S.B. 3103/40



OFFICE No. 26650
DRAWER 87
SHEET B-41