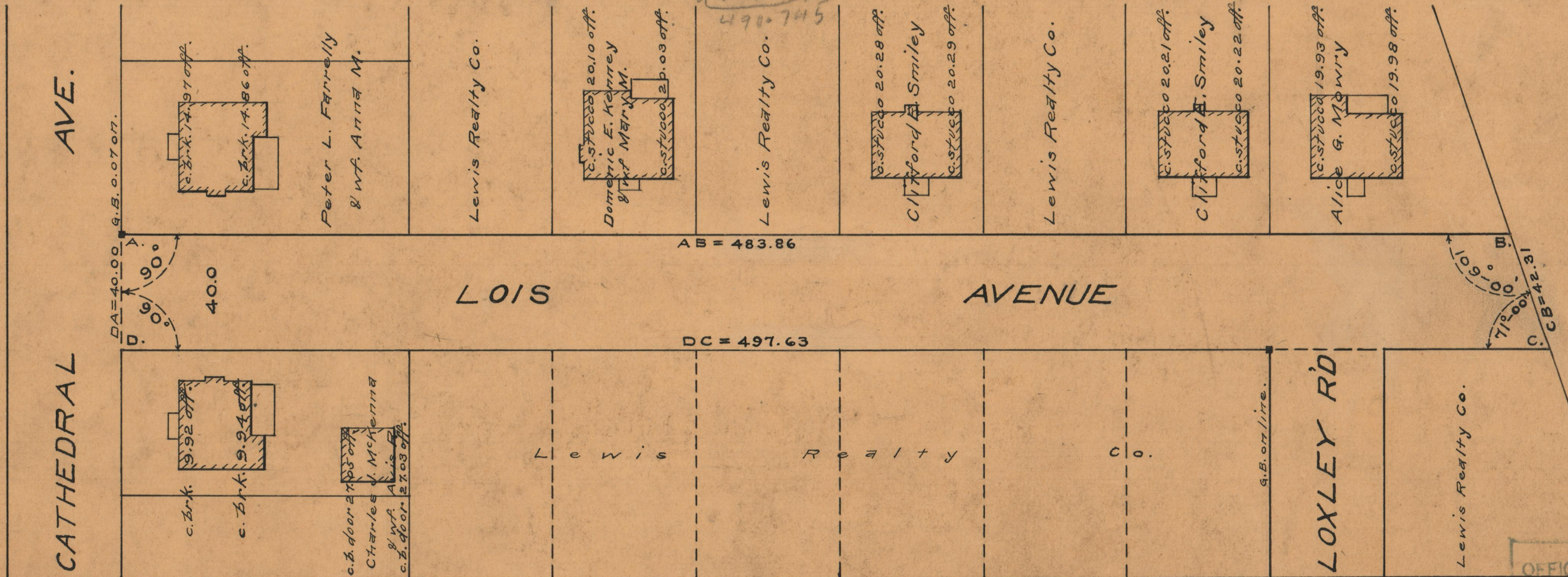
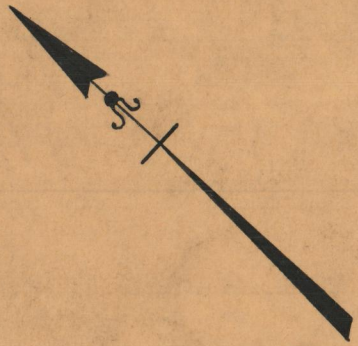


PLAT OF
LOIS AVENUE
FROM CATHEDRAL AVE. TO ITS EASTERLY TERMINATION
BOARD OF ALDERMEN
OCTOBER 3, 1940

ENGINEER'S OFFICE
STREET LANE DEPT.
Jan. 4, 1938.
057452

SCALE 1" = 40'



OFFICE No. 26636
DRAWER " 87
SHEET B-38