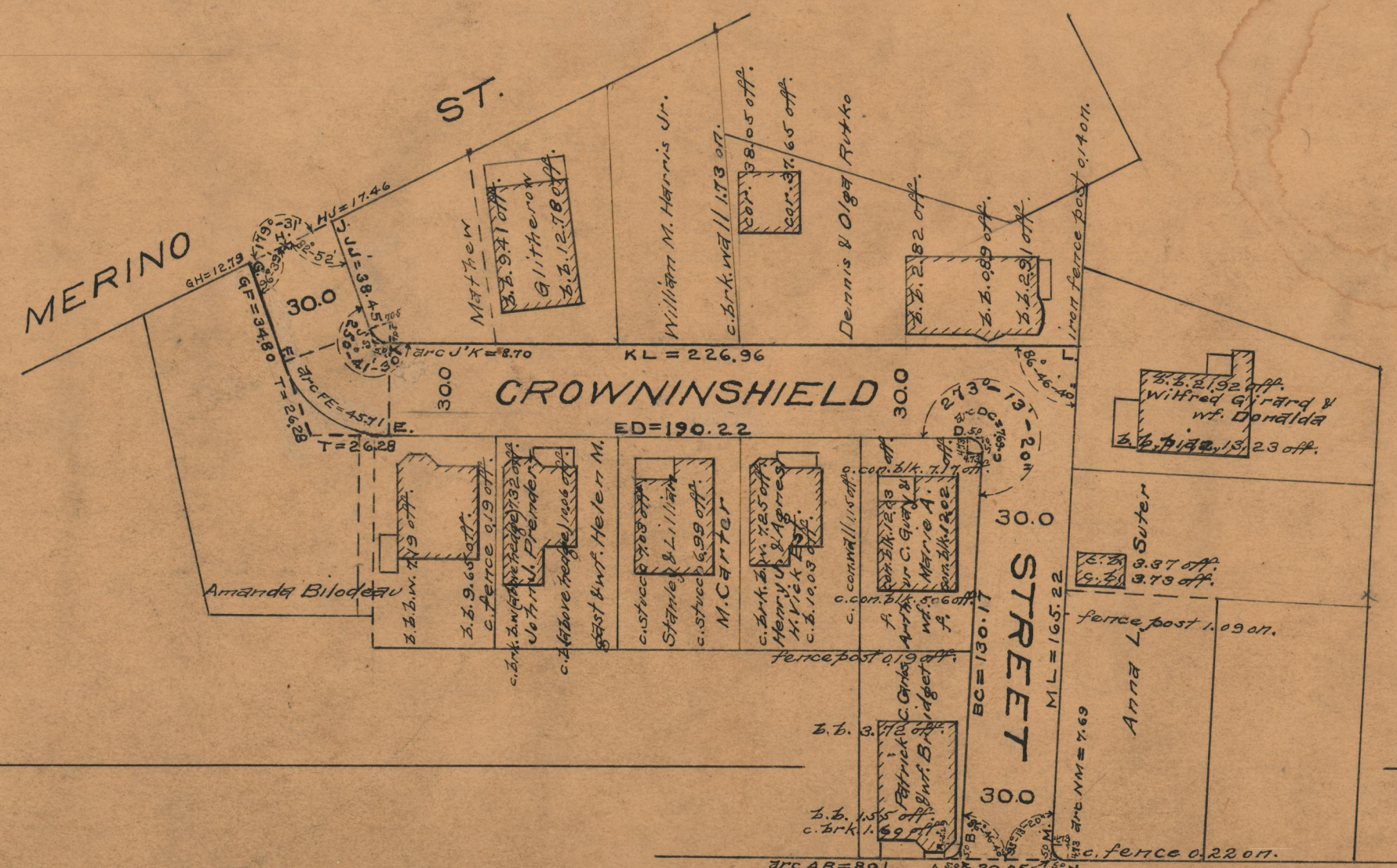


PLAT OF CROWNINSHIELD STREET

FROM IDA ST. TO MERINO ST.
BOARD OF ALDERMEN
AUGUST 5, 1937.

ENGINEER'S OFFICE
STREET IMP. DEPT.
Nov. 24, 1937
057413

SCALE 1" = 50'



359° - 54' - 60"
273° - 13' - 20"
86° - 46' - 40"