

PLAT OF MERINO STREET

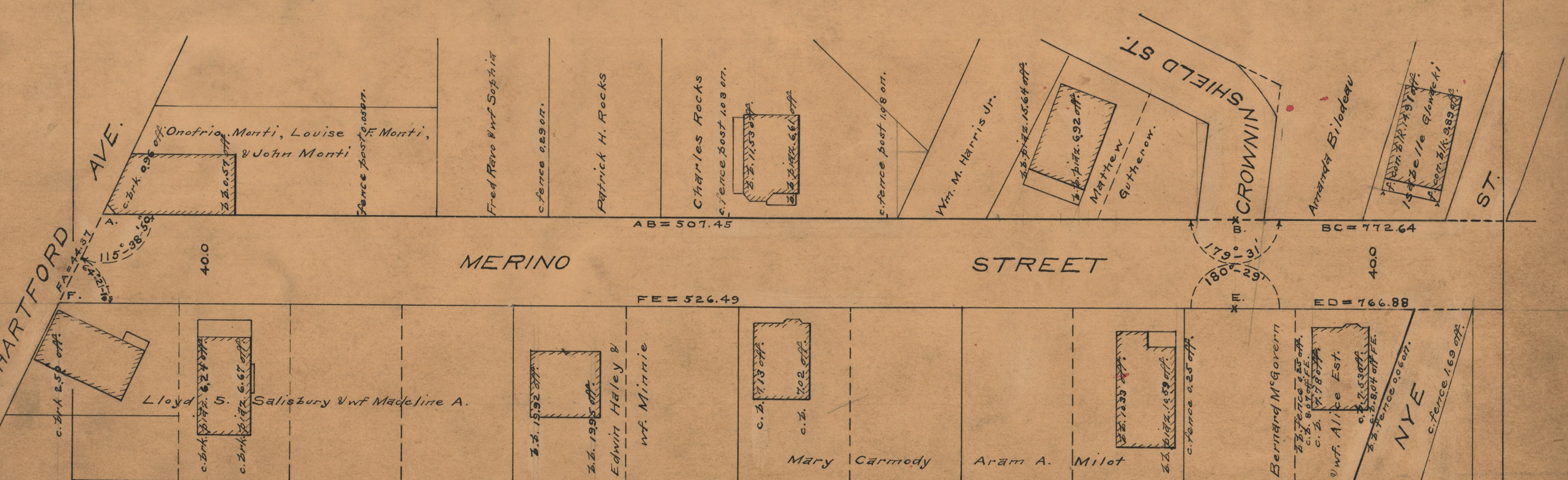
IN TWO SHEETS
FROM HARTFORD AVE. TO EASTWOOD AVE.
BOARD OF ALDERMEN
AUGUST 5, 1937.

PROVIDENCE, R.I.
CITY ENGINEER'S OFFICE
STREET LINE DEPT.

Sept. 30, 1937

057376

SCALE 1" = 40'



HARTFORD AVE.

AVE.

CROWNINSHIELD ST.

Amanda Bilodeau

Isabelle Glondocki

ST.

MERINO STREET

STREET

NYE

Lloyd S. Salisbury & wf Madeline A.

Edwin Haley & wf Minnie

Mary Carmody

Aram A. Milot

Bernard McGovern & wf Alice Est.

AB = 507.45

BC = 772.64

FE = 526.49

ED = 766.88

40.0

40.0