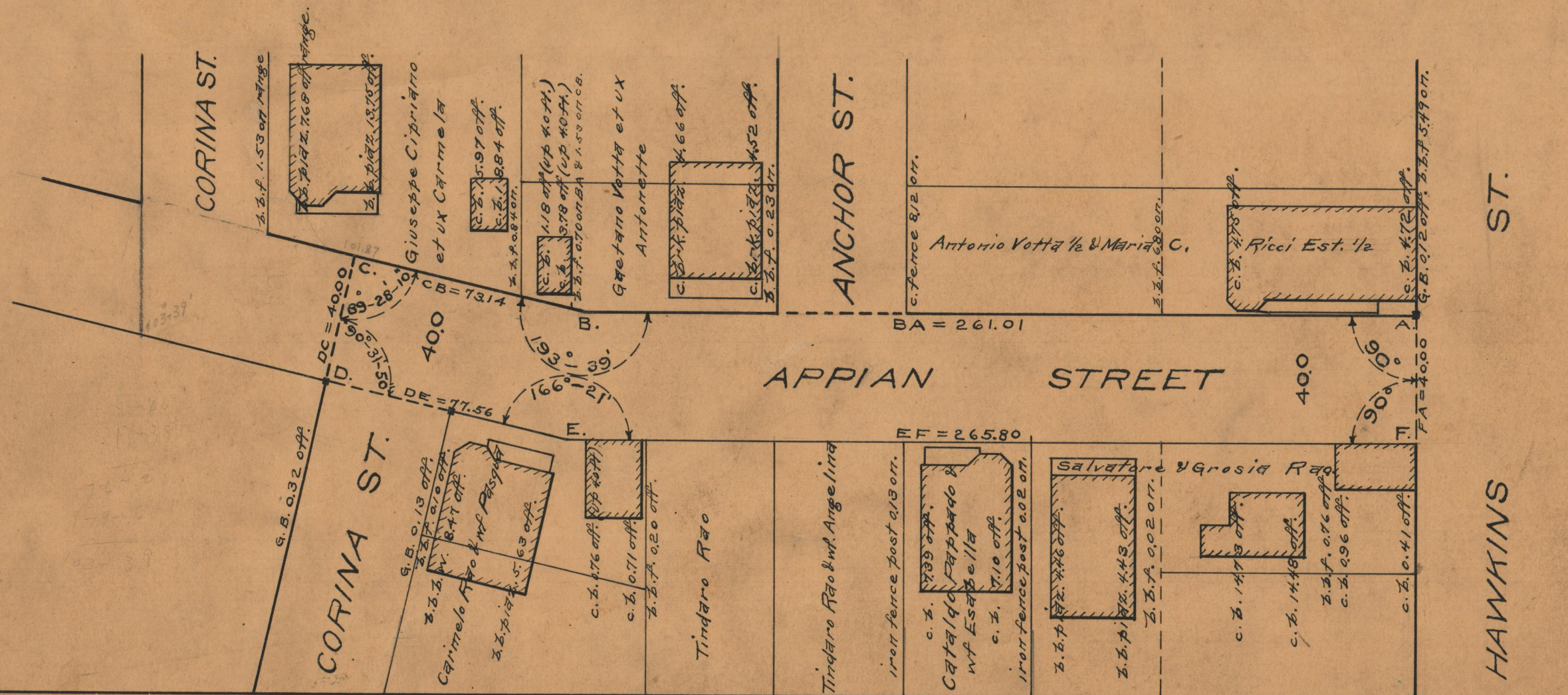


PLAT OF  
**APPIAN STREET**

FROM HAWKINS ST. TO THE RANGE OF THE  
 NORTHWESTERLY LINE OF CORINA ST.  
 BOARD OF ALDERMEN  
 JUNE 17, 1937.

PROVIDENCE, R.I.  
 CITY ENGINEER'S OFFICE  
 STREET LINE DEPT.  
 July 15, 1937  
 057253

SCALE 1"=40'



OFFICE No. 26607  
 DRAWER 87  
 SHEET B-26