

NOTE :- The area designated by the letters EFQH was condemned for highway purposes July 6, 1937.

The area designated by the letters HGKJ was established as a public highway December 16, 1937.

PLAT OF MARIETTA STREET

FROM THE RANGE OF THE NORTHWESTERLY LINE OF
CARNAC ST. TO ITS EASTERLY TERMINATION
BOARD OF ALDERMEN

JUNE 17, 1937.

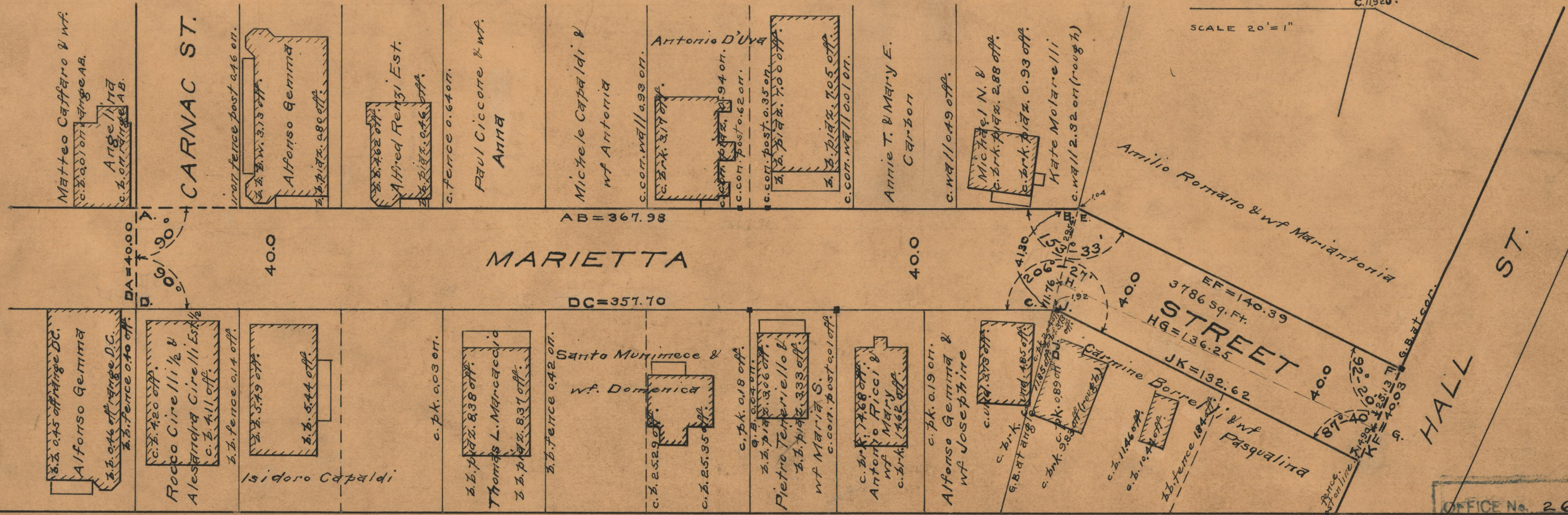
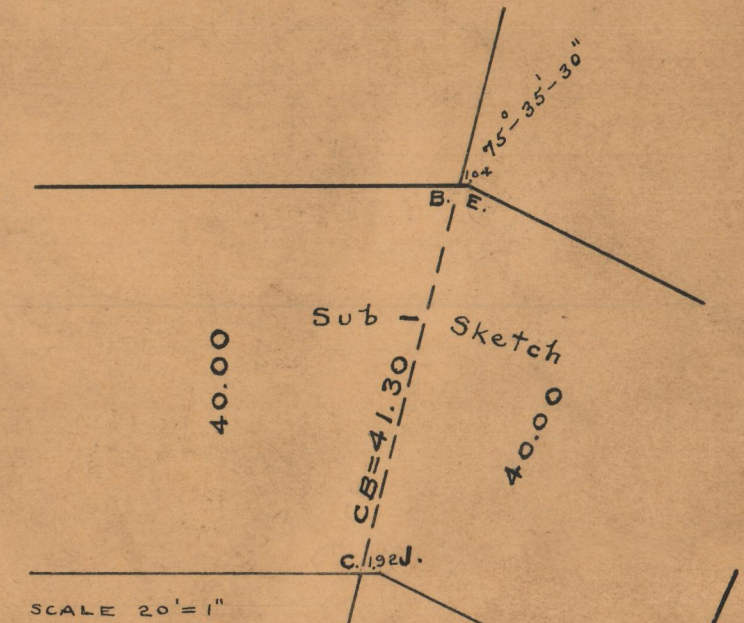
FROM ITS EASTERLY TERMINATION TO HALL ST.
BOARD OF ALDERMEN

JULY 6, 1937. (condemnation)

DECEMBER 16, 1937. (1549)

SCALE 1" = 40'

PROVIDENCE, R.I.
CITY ENGINEER'S OFFICE
STREET LINE DEPT.
July 15, 1937.
057252



OFFICE No. 26606
DRAWER, 87
SHEET B-25