

PLAT OF
HIGHLAND AVENUE

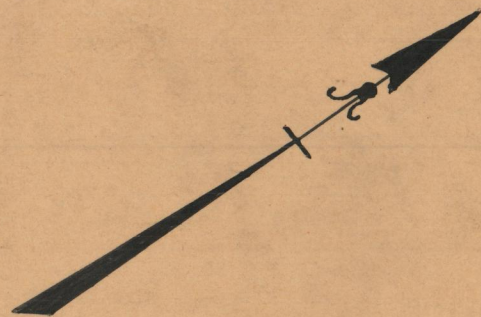
FROM
SIXTH ST. TO EIGHTH ST.
 BOARD OF ALDERMEN

JULY 30, 1936

PROVIDENCE, R.I.
 CITY ENGINEER'S OFFICE
 STREET LINE DEPT.

Sept. 23, 1936.

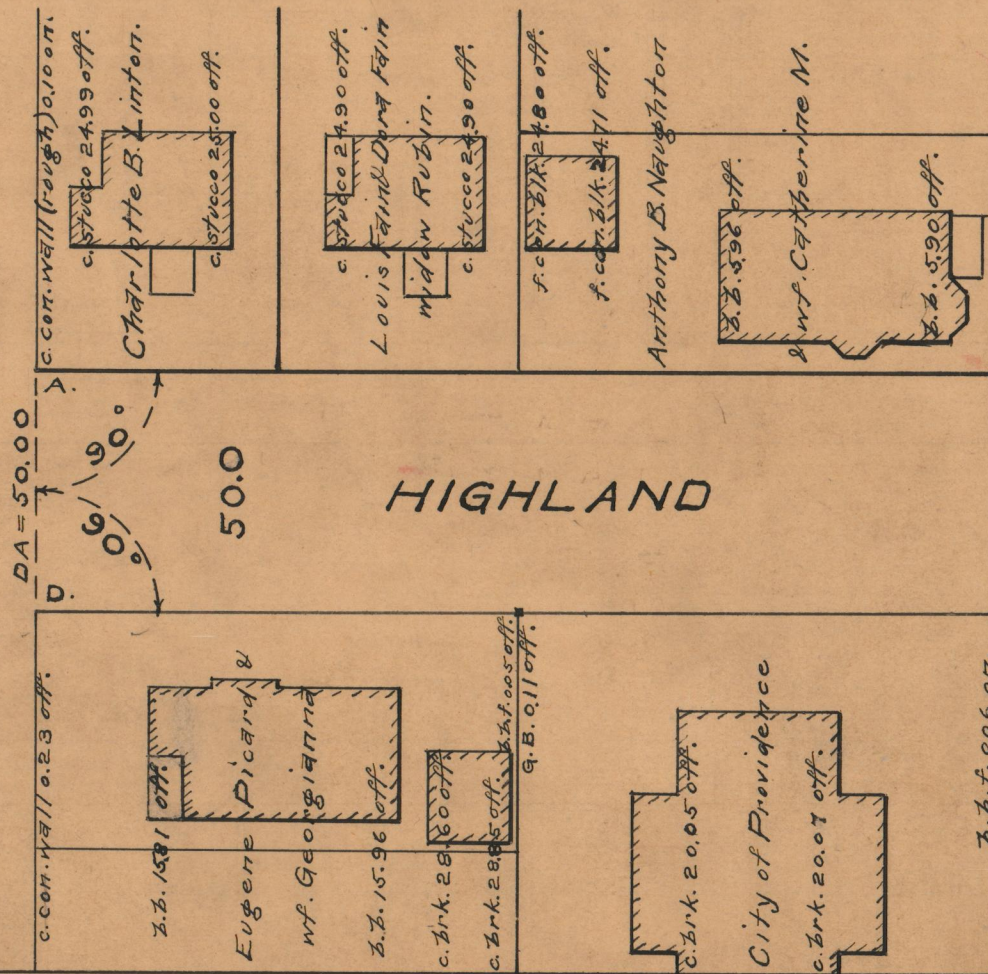
056931



SCALE 1" = 40'

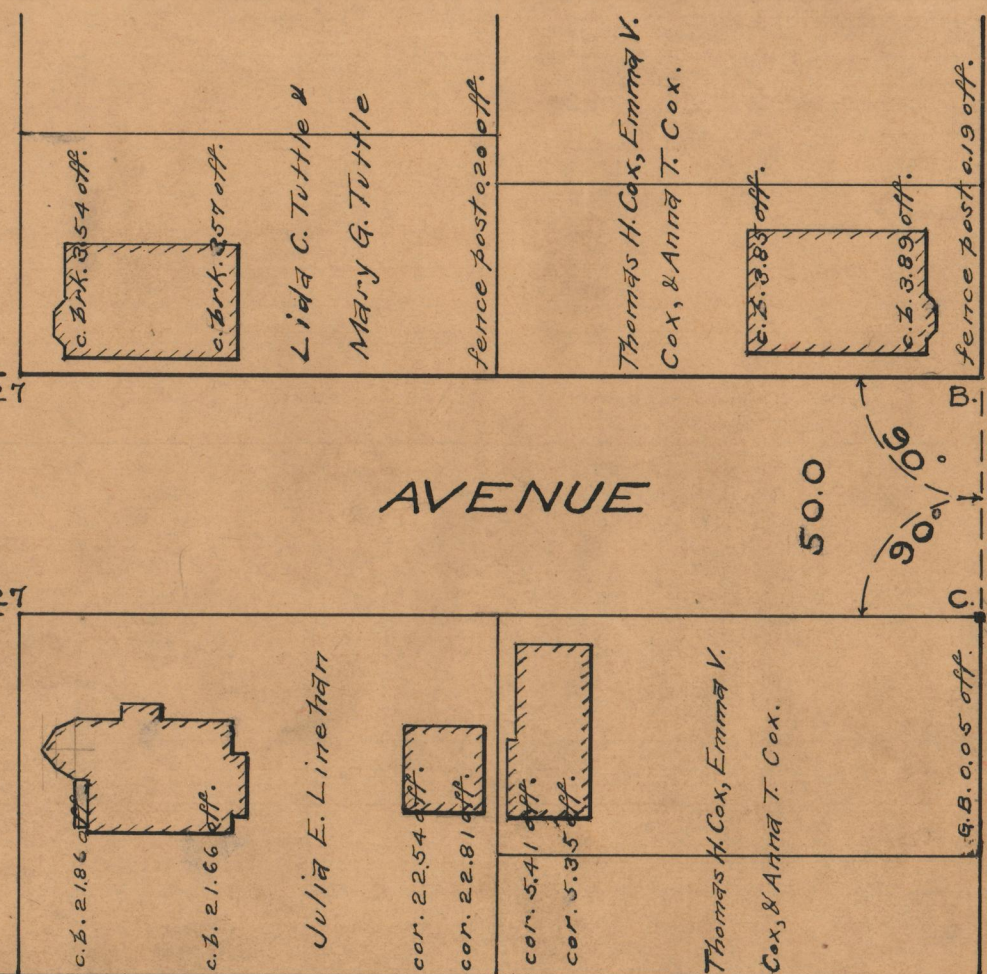
SIXTH ST.

SIXTH



SEVENTH ST.

SEVENTH



EIGHTH ST.

EIGHTH

HIGHLAND AVENUE

HIGHLAND AVENUE