

PLAT OF
HIGHLAND AVENUE

FROM
 FOURTH ST. TO SIXTH ST.

BOARD OF ALDERMEN

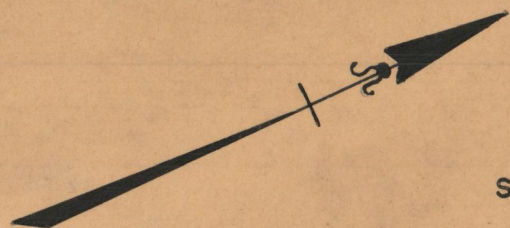
SEPTEMBER 17, 1936

449.27

PROVIDENCE, R.I.
 CITY ENGINEER'S OFFICE
 STREET LINE DEPT.

Sept. 18, 1936.

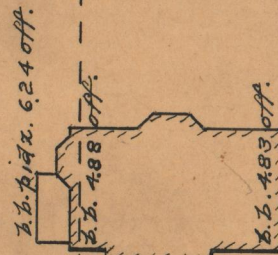
056930



SCALE 1"=40'

ST.

Willard A. Kent & wf. Grace E.



c.pk. 0.10 off.

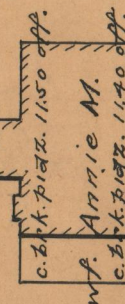
c.pk. 0.16 off.

John T. Cottrell Co.

ST.

Annie M. Lovett.

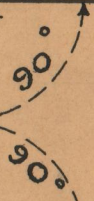
James H. Lovett &



William H. LeLacheure

ST.

DA = 50.00



50.0

HIGHLAND

AB = 440.27

AVENUE

50.0

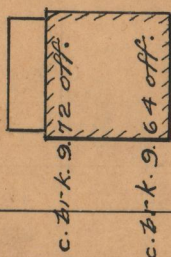


CB = 50.00

DC = 440.27

FOURTH

c. cor. w. 4th 1.52 off.



Mary A. Cooper &
 Bert & M. Itchner

f. cor. 2nd 28.73 off.

f. cor. 2nd 28.66 off.

c. fence post on line.

John T. Cottrell Co.

FIFTH

iron fence post 62.4 off.

Jewish Orphanage of R. I.

iron fence post 58.8 off.

SIXTH

OFFICE No. 26557

DRAWER " 87

SHEET " B-10